

# STATE AND REGIONAL INDICATORS

VICTORIA

EMBARGO: 11:30AM (CANBERRA TIME) TUES 17 FEB 2004

## CONTENTS

	<i>page</i>
Notes . . . . .	2
Abbreviations and symbols . . . . .	3
Main features . . . . .	5
<b>TABLES</b>	
List of tables . . . . .	8
Summary of statistical indicators: State comparison . . . . .	10
State final demand . . . . .	11
Population . . . . .	13
Labour market . . . . .	14
Price indexes . . . . .	23
Finance . . . . .	27
Construction . . . . .	32
New motor vehicle sales . . . . .	40
Retail . . . . .	41
Tourism . . . . .	43
Production . . . . .	44
Trade . . . . .	46
Natural resources . . . . .	49
Other . . . . .	51
Annual . . . . .	52
<b>ADDITIONAL INFORMATION</b>	
Glossary . . . . .	58

## INQUIRIES

- For further information about these and related statistics, contact the National Information and Referral Service on 1300 135 070, or Peter Hawkes on Melbourne (03) 9615 7463.

## NOTES

FORTHCOMING ISSUES	<i>ISSUE</i>	<i>RELEASE DATE</i>
	March 2004	10 May 2004
	June 2004	10 August 2004
CHANGES IN THIS ISSUE	Three additional tables are included in this issue. Topics covered are recorded crime offences, median property prices and wage and salary earner statistics. These tables are not expected to be included in the next issue, but may be included in future issues as further data becomes available.	
EXPLANATORY NOTES	<p>The statistics shown are the latest available as at 14 January 2004.</p> <p>Explanatory notes in the form found in other ABS publications are not included in <i>State and Regional Indicators, Victoria</i>. Readers are directed to the explanatory notes contained in related ABS publications.</p>	

Vince Lazzaro  
Regional Director, Victoria

## ABBREVIATIONS AND SYMBOLS

ABR	Australian Business Register
ASGC	Australian Standard Geographical Classification
AHECC	Australian Harmonised Export Commodity Classification
ANZSIC	Australian and New Zealand Standard Industrial Classification
ATO	Australian Taxation Office
(B)	Borough
(C)	City
CBD	Central Business District
EPA	Environment Protection Authority
FT	Full time
LGA	Local Government Area
ML	megalitres
mL	millilitres
MSD	Melbourne Statistical Division
MSR	Major Statistical Region
n.a.	not available
n.e.c.	not elsewhere classified
n.e.s.	not elsewhere specified
NEPM	National Environment Protection Measure
n.p.	not available for publication but included in totals where applicable
n.y.a.	not yet available
p	preliminary — figure or series subject to revision
PT	Part time
r	figure or series revised since previous issue
(RC)	Rural City
(S)	Shire
SD	Statistical Division
SEPP	State Environment Protection Policy
SITC	Standard International Trade Classification
SLA	Statistical Local Area
*	estimate is subject to sampling variability too high for most practical purposes
. .	not applicable
—	nil or rounded to zero (including null cells)

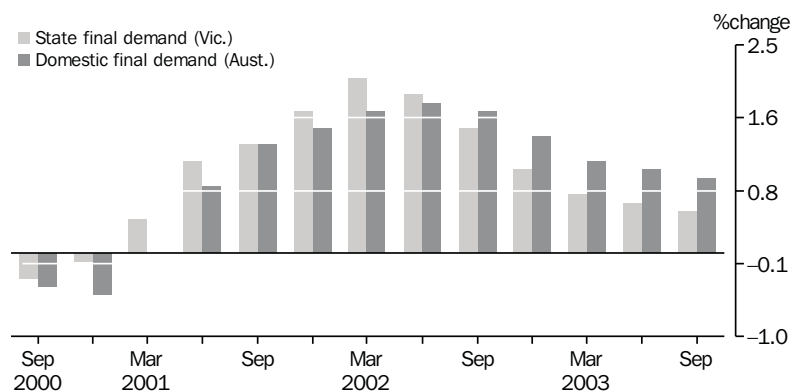


## MAIN FEATURES

### STATE FINAL DEMAND

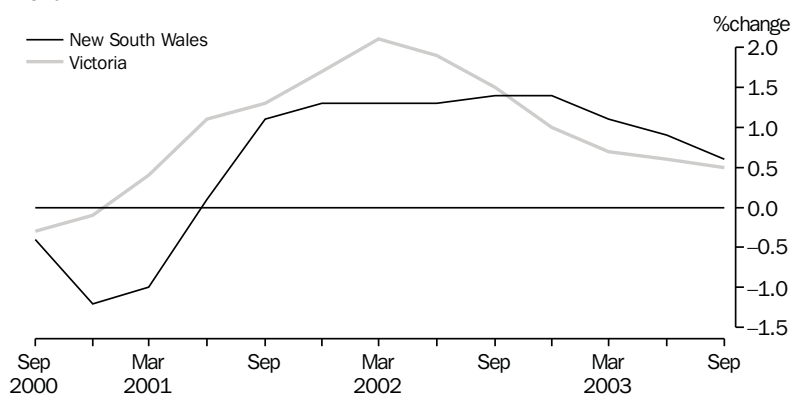
For the September quarter 2003, the estimate for state final demand (trend) in volume terms was \$48,231m (\$48b), an increase of 0.5% on the June quarter 2003, in real terms. Over the same period (June to September quarter 2003), the Australian estimate (domestic final demand) increased by 0.9%. In annual terms (September 2002 to September 2003), Victorian state final demand (trend) grew by 2.8%, while domestic final demand (trend) grew 4.5%.

STATE FINAL DEMAND, Chain volume measures — change from previous quarter:  
Trend



Growth in Victorian state final demand (trend) for the last three quarters has been largely driven by Household final consumption expenditure which increased by \$840m from the December 2002 quarter, and by \$269m in the September quarter 2003. However growth in state final demand has slowed from a peak of 2.1% (in March quarter 2002) to 0.5% (in September quarter 2003). In NSW growth in the trend series has also slowed from 1.4% (in December quarter 2002), to 0.6%.

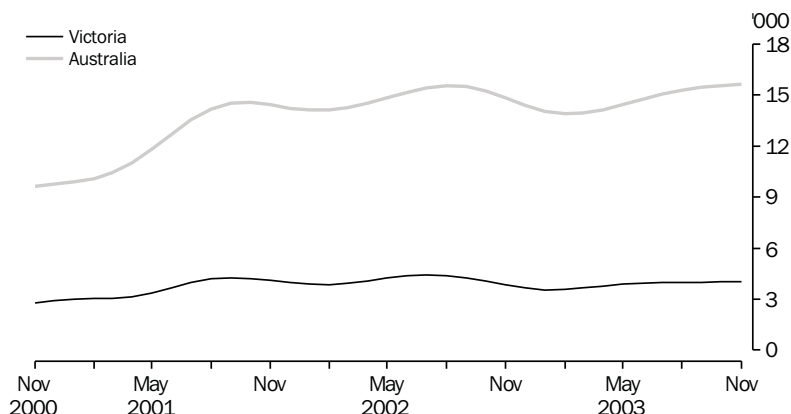
STATE FINAL DEMAND, Chain volume measures — change from previous quarter:  
Trend



## CONSTRUCTION

The trend estimate for the total number of dwelling units approved for Victoria in November 2003 was 4040 dwellings, up 0.7% from the previous month. This is compared to the national estimate (trend) which increased by 0.3% over the same period. The growth rate for dwelling unit approvals in Victoria increased in each of the two months to November, following five months of slower growth prior to this. In comparison, the growth rate for the national estimate (trend) slowed significantly in each of the four months to November.

DWELLING UNITS APPROVED: Trend estimates

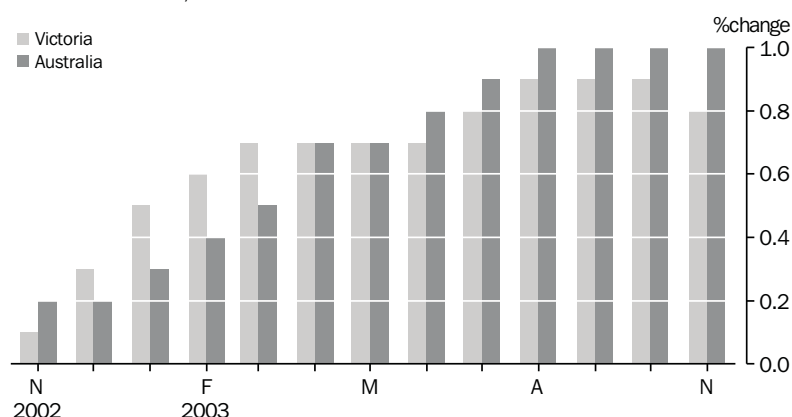


The total value of Victorian building approvals (trend) was \$1,131.5m in November 2003, down 2.2% from July and 1.9% lower than in November 2002.

## RETAIL TURNOVER

Retail turnover in Victoria in November 2003 was \$3,702.3m in trend terms, up 0.8% from October 2003 and 8.7% from November 2002. National retail trade growth was 1.0% for the month and 8.9% for the year to November 2003. The fastest growing retail industries in Victoria, for the year to November 2003, were other retailing (Pharmaceutical, cosmetics etc.) 31.3% and hospitality and service industries 20.7%. Recreational goods recorded the only decline of 4.9%.

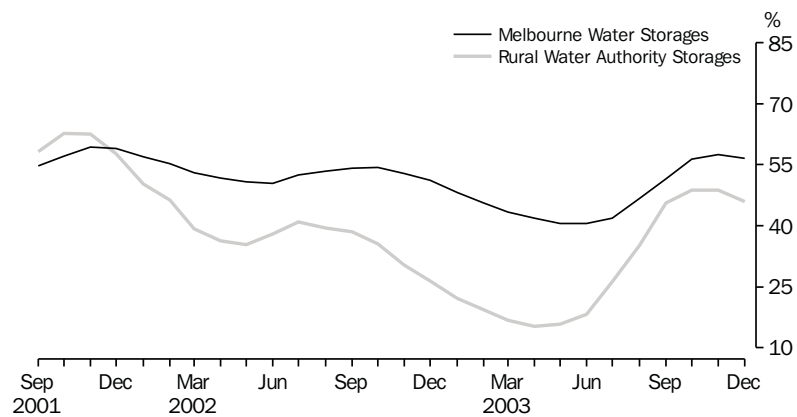
RETAIL TURNOVER, Trend



## WATER STORAGES

At the end of December 2003, Victorian water storages were at 47.9% of capacity, a decrease of 2.5% from the end of November, and 18.9% higher than December 2002. Rural water storages at the end of December 2003 were at 45.9% of capacity, a decrease of 2.9% over the previous 2 months, and an increase of 19.5% from a year ago. Melbourne water storages at the end of December 2003 were at 56.6% of capacity, an increase of 0.3% over the previous two months, and 5.4% more than the level recorded at the end of December 2002.

WATER STORAGE VOLUMES, Percent of capacity — Monthly



## LIST OF TABLES

Page

### SUMMARY

- |          |   |    |
|----------|---|----|
| <b>1</b> | Summary of statistical indicators: State comparison | 10 |
|----------|---|----|

### STATE FINAL DEMAND

- |          |  |    |
|----------|--|----|
| <b>2</b> | State final demand: original   | 11 |
| <b>3</b> | State final demand, chain volume measures: seasonally adjusted and trend | 12 |

### POPULATION

- |          |   |    |
|----------|---|----|
| <b>4</b> | Estimated resident population and components of population change | 13 |
| <b>5</b> | Registration of births, deaths, marriages and divorces            | 13 |

### LABOUR MARKET

- |           |   |    |
|-----------|---|----|
| <b>6</b>  | Civilian labour force: all series                             | 14 |
| <b>7</b>  | Civilian labour force, by region                              | 15 |
| <b>8</b>  | Employed persons, by industry, November 2003                  | 17 |
| <b>9</b>  | Part-time workers, by sex                                     | 18 |
| <b>10</b> | Duration of unemployment, by sex and major statistical region | 19 |
| <b>11</b> | Job vacancies   | 21 |
| <b>12</b> | Industrial disputes causing stoppage of work                  | 21 |
| <b>13</b> | Average weekly earnings of employees, by sex: all series      | 22 |
| <b>14</b> | Wage cost indexes   | 23 |

### PRICE INDEXES

- |           |   |    |
|-----------|---|----|
| <b>15</b> | Consumer price index, by group: Melbourne                                   | 23 |
| <b>16</b> | House price indexes: Melbourne and weighted average of eight capital cities | 24 |
| <b>17</b> | Price indexes of materials used in building: Melbourne                      | 24 |
| <b>18</b> | Price indexes of materials used in manufacturing industries: Australia      | 25 |
| <b>19</b> | Price indexes of articles produced by manufacturing industry: Australia     | 26 |
| <b>20</b> | Export price indexes, by commodity: Australia                               | 26 |

### FINANCE

- |           |  |    |
|-----------|--|----|
| <b>21</b> | Private new capital expenditure, by type of asset and industry: original         | 27 |
| <b>22</b> | Private new capital expenditure, by type of asset: seasonally adjusted and trend | 27 |
| <b>23</b> | Commercial finance commitments   | 28 |
| <b>24</b> | Lease finance commitments, by purpose  | 28 |
| <b>25</b> | Personal finance commitments   | 29 |



FINANCE <i>continued</i>	<b>26</b>	Secured housing finance commitments, dwelling units: all series	30
	<b>27</b>	Secured housing finance commitments, dwelling units, by type of borrower	31
CONSTRUCTION	<b>28</b>	Building approvals: all series	32
	<b>29</b>	Building approvals, by major statistical region	34
	<b>30</b>	Building approvals, by local government area	36
	<b>31</b>	Value of building work, chain volume measures	38
	<b>32</b>	Value of building activity by section of State, June quarter 2003	39
NEW MOTOR VEHICLE SALES	<b>33</b>	New motor vehicle sales: all series	40
RETAIL	<b>34</b>	Retail turnover, by industry: all series	41
	<b>35</b>	Retail turnover, chain volume measures: all series	42
TOURISM	<b>36</b>	Tourist accommodation	43
	<b>37</b>	Tourist accommodation, by tourism region, June quarter 2003	43
PRODUCTION	<b>38</b>	Livestock slaughterings and meat production: all series	44
	<b>39</b>	Other production	45
TRADE	<b>40</b>	International merchandise trade, by commodity	46
	<b>41</b>	Balance of international merchandise trade	47
	<b>42</b>	International merchandise trade, by major trading partners	48
NATURAL RESOURCES	<b>43</b>	Air quality	49
	<b>44</b>	Storage volumes in Victorian water storages, by river basin	50
OTHER	<b>45</b>	Internet Activity, by Statistical Division	51
ANNUAL	<b>46</b>	Recorded crime offences	52
	<b>47</b>	Median property prices	54
	<b>48</b>	Wage and salary earner statistics	56

			% change from the same period in the previous year					
	Period	Vic. as a proportion of Australia %	Vic.	NSW	Qld	SA	WA	Aust.
State final demand (trend, chain volume measure)	Sep qtr 03	24.8	<b>2.8</b>	4.1	5.6	6.1	8.2	4.5
Population								
Total population	Jun qtr 03	24.7	<b>1.2</b>	0.8	2.3	0.6	1.4	1.2
Natural increase(a)	Jun qtr 03	..	<b>0.5</b>	0.6	0.6	0.4	0.6	0.6
Net overseas migration(a)	Jun qtr 03	..	<b>0.7</b>	0.7	0.6	0.3	0.9	0.6
Net interstate migration(a)	Jun qtr 03	..	—	-0.5	1.0	-0.1	-0.1	..
Labour								
Number employed (trend)	Nov 03	25.1	<b>1.1</b>	1.6	3.7	1.7	0.9	1.8
Unemployment rate (trend)(b)	Nov 03	..	<b>-0.5</b>	-0.4	-1.0	0.1	—	-0.5
Participation rate (trend)(b)	Nov 03	..	<b>-0.7</b>	—	-0.3	0.5	-0.7	-0.3
Working days lost for 12 months ended	Sep 03	38.0	<b>19.0</b>	49.3	13.9	-10.8	73.7	31.6
Job vacancies (original)	Nov 03	25.4	<b>22.1</b>	4.4	15.4	-22.6	22.8	10.0
Average weekly FT adult total earnings (trend)	Aug 03	..	<b>5.8</b>	6.1	6.3	7.0	5.9	6.2
Wage cost index (total hourly rates of pay excluding bonuses)	Sep qtr 03	..	<b>3.3</b>	3.9	3.4	4.0	3.1	3.6
Prices(c)								
Consumer price index	Sep qtr 03	..	<b>2.9</b>	2.0	2.9	3.6	2.1	2.6
Price index of materials used in house building	Sep qtr 03	..	<b>2.4</b>	4.5	3.6	2.2	2.3	3.2
Price index of materials used in building other than house building	Sep qtr 03	..	<b>3.6</b>	4.1	3.4	3.1	4.4	3.9
Established house price index	Sep qtr 03	..	<b>11.6</b>	16.5	27.8	22.8	19.2	17.6
Finance								
Actual Capital expenditure (current prices — trend)	Sep qtr 03	24.3	<b>0.5</b>	4.0	-0.1	23.8	36.7	7.7
Commercial finance commitments	Oct 03	24.8	<b>13.5</b>	31.3	58.9	10.7	26.8	27.8
Lease finance commitments	Oct 03	27.3	<b>35.5</b>	12.8	14.5	62.4	118.7	23.1
Personal finance commitments	Oct 03	24.4	<b>18.4</b>	23.0	34.7	19.4	11.0	22.7
Secured housing finance commitments (trend)	Oct 03	21.7	<b>11.5</b>	18.3	32.0	22.6	23.5	20.7
Building								
Dwelling units approved (trend)	Nov 03	25.9	<b>5.6</b>	-9.5	10.8	2.3	21.9	5.2
Value of residential building approved (trend)	Nov 03	30.2	<b>13.4</b>	-3.6	21.4	15.2	26.5	7.3
Total value of building approved (trend)	Nov 03	26.7	<b>-1.9</b>	-14.3	20.6	-10.8	11.8	1.0
Value of building commenced (chain volume measure)	Jun qtr 03	31.6	<b>-0.9</b>	-9.7	-3.7	10.9	12.3	-1.9
Value of building work done (seas. adj., chain volume measure)	Jun qtr 03	29.1	<b>-1.2</b>	10.4	0.6	14.2	15.0	5.5
Consumer spending								
New motor vehicle sales (trend)	Nov 03	26.3	<b>8.0</b>	9.2	18.4	18.7	14.5	12.3
Retail turnover (trend)	Nov 03	23.5	<b>8.7</b>	7.9	14.0	3.8	6.8	8.9
Takings from tourist accommodation	Jun qtr 03	17.8	<b>6.8</b>	-2.3	10.8	7.2	17.0	5.4
International merchandise trade								
Imports	Nov 03	32.3	<b>-7.0</b>	-17.0	-8.8	-22.0	-4.4	-12.3
Exports	Nov 03	15.4	<b>-16.8</b>	-18.2	-10.2	-35.5	-2.3	-12.8

(a) Percentage change figures for components of population increase indicate the contribution of each component to the total population increase.

(b) Percentage change columns indicate the difference between the percentage rate for the reference period, and the percentage rate for the same period in the previous year.

(c) Data relates to capital cities.

	Dec qtr 2001	Mar qtr 2002	Jun qtr 2002	Sep qtr 2002	Dec qtr 2002	Mar qtr 2003	Jun qtr 2003	Sep qtr 2003
CURRENT PRICES (\$M)								
<b>Final consumption expenditure</b>								
General government	r 7 171	r 7 140	r 7 844	r 7 373	r 7 880	r 7 716	r 8 235	8 003
Households	r 28 343	r 26 130	r 27 652	r 28 301	r 30 070	r 27 555	r 29 006	29 726
<b>Gross fixed capital formation</b>								
Private								
Dwellings	r 2 814	r 2 689	r 3 265	r 3 292	r 3 281	r 3 115	r 3 273	3 521
Non-dwelling construction(b)	r 1 313	r 1 234	r 1 500	r 1 904	r 1 743	r 1 656	r 1 868	1 776
Machinery and equipment	r 3 594	r 2 984	r 3 634	r 3 495	r 4 140	r 3 309	r 3 530	3 559
Livestock	r 159	r 159	r 159	r 118	r 118	r 118	r 118	157
Intangible fixed assets	r 808	r 753	r 770	r 805	r 820	r 795	r 754	756
Ownership transfer costs	734	768	764	868	868	816	820	946
<i>Total private</i>	<i>r 9 422</i>	<i>r 8 587</i>	<i>r 10 092</i>	<i>r 10 483</i>	<i>r 10 970</i>	<i>r 9 810</i>	<i>r 10 364</i>	<i>10 715</i>
Public	r 1 391	r 1 352	r 1 667	r 1 076	r 1 511	r 1 490	r 2 016	1 219
<b>State final demand</b>	<b>r 46 327</b>	<b>r 43 210</b>	<b>r 47 255</b>	<b>r 47 234</b>	<b>r 50 432</b>	<b>r 46 571</b>	<b>r 49 621</b>	<b>49 664</b>
International trade— exports of goods	6 180	6 074	5 928	5 643	5 824	r 4 747	r 4 504	4 683
International trade— imports of goods	9 725	9 069	9 413	10 483	11 117	r 10 452	r 10 079	10 203
Compensation of employees(c)	r 21 990	r 21 077	r 21 904	r 22 356	r 23 870	r 22 548	r 23 441	r 23 902

## CHAIN VOLUME MEASURES(d) (\$M)

<b>Final consumption expenditure</b>								
General government	r 7 233	r 7 196	r 7 468	r 7 308	r 7 584	r 7 423	r 7 706	7 552
Households	r 28 452	r 25 973	r 27 491	r 27 893	r 29 494	r 26 730	r 28 167	28 820
<b>Gross fixed capital formation</b>								
Private								
Dwellings	r 2 820	r 2 672	r 3 229	r 3 238	r 3 212	r 3 008	r 3 090	3 275
Non-dwelling construction	r 1 316	r 1 233	r 1 490	r 1 876	r 1 709	r 1 614	r 1 790	1 684
Machinery and equipment	r 3 566	r 2 982	r 3 699	r 3 621	r 4 279	r 3 489	r 3 827	3 965
Livestock	r 159	r 159	r 159	r 115	r 115	r 115	r 115	160
Intangible fixed assets	r 803	r 759	r 787	r 832	r 861	r 845	r 815	831
Ownership transfer costs	724	r 733	r 751	r 812	859	752	705	765
<i>Total private</i>	<i>r 9 396</i>	<i>r 8 530</i>	<i>r 10 131</i>	<i>r 10 495</i>	<i>r 11 035</i>	<i>r 9 823</i>	<i>r 10 342</i>	<i>10 680</i>
Public	r 1 389	r 1 353	r 1 666	r 1 078	r 1 518	r 1 500	r 2 020	1 241
<b>State final demand</b>	<b>r 46 474</b>	<b>r 43 049</b>	<b>r 46 759</b>	<b>r 46 774</b>	<b>r 49 631</b>	<b>r 45 476</b>	<b>r 48 235</b>	<b>48 292</b>
International trade— exports of goods	6 130	6 029	6 119	5 740	5 959	r 4 849	r 4 852	5 093
International trade— imports of goods	9 570	9 112	9 708	10 810	11 482	r 11 002	r 11 165	11 746

(a) Revisions to various series resulted from the availability of more up to date source data and the incorporation of new supply and use benchmarks.

(b) The series previously labelled 'Other buildings and structures' has been renamed 'Non-dwelling construction'.

(c) Method of calculation changed from March quarter 2002. For more information, see feature article in December quarter 2001 issue of *Australian National Accounts: National Income, Expenditure and Product* (cat. no. 5206.0).

(d) Reference year for chain volume measures is 2001–02.

Source: *Australian National Accounts: National Income, Expenditure and Product* (cat. no. 5206.0); ABS data available on request, *Australian National Accounts*.

## STATE FINAL DEMAND, CHAIN VOLUME MEASURES(a): SEASONALLY ADJUSTED AND TREND

	Dec qtr	Mar qtr	Jun qtr	Sep qtr	Dec qtr	Mar qtr	Jun qtr	Sep qtr
	2001	2002	2002	2002	2002	2003	2003	2003
SEASONALLY ADJUSTED (\$m)								
Final consumption expenditure								
General government	7 142	7 274	7 365	7 393	7 519	7 505	7 603	7 654
Households	26 981	27 299	27 670	27 857	27 898	28 182	28 348	28 705
Gross fixed capital formation								
Private								
Dwellings	2 818	2 865	3 116	3 123	3 229	3 218	2 978	3 173
Non-dwelling construction(b)	1 255	1 321	1 491	1 845	1 635	1 742	1 769	1 654
Machinery and equipment	3 313	3 382	3 585	3 589	3 975	3 938	3 715	3 944
Livestock	159	159	159	115	115	115	115	160
Intangible fixed assets	780	774	799	828	835	862	828	826
Ownership transfer costs	716	749	762	790	851	769	718	744
Total private	9 039	9 250	9 926	10 290	10 640	10 643	10 123	10 501
Public	1 383	1 375	1 462	1 300	1 514	1 525	1 777	1 462
<b>State final demand</b>	<b>44 545</b>	<b>45 198</b>	<b>46 424</b>	<b>46 840</b>	<b>47 571</b>	<b>47 855</b>	<b>47 850</b>	<b>48 322</b>
International trade—exports of goods	5 685	6 234	6 219	5 879	5 538	5 041	4 942	5 222
International trade—imports of goods	9 202	9 563	9 948	10 422	11 037	11 363	11 638	11 328
TREND ESTIMATES(c) (\$m)								
Final consumption expenditure								
General government	7 184	7 260	7 345	7 424	7 480	7 539	7 594	7 631
Households	26 982	27 325	27 618	27 823	27 970	28 153	28 394	28 663
Gross fixed capital formation								
Private								
Dwellings	2 786	2 931	3 054	3 169	3 198	3 154	3 113	3 086
Non-dwelling construction(b)	1 239	1 363	1 541	1 682	1 745	1 734	1 716	1 710
Machinery and equipment	3 213	3 407	3 539	3 658	3 764	3 824	3 856	3 864
Livestock	162	159	146	128	112	114	128	143
Intangible fixed assets	779	782	798	823	842	845	838	828
Ownership transfer costs	733	744	770	805	808	780	745	728
Total private	8 907	9 388	9 855	10 268	10 470	10 447	10 394	10 365
Public	1 369	1 392	1 394	1 395	1 478	1 578	1 621	1 589
<b>State final demand</b>	<b>44 441</b>	<b>45 365</b>	<b>46 213</b>	<b>46 911</b>	<b>47 399</b>	<b>47 714</b>	<b>48 003</b>	<b>48 231</b>
International trade—exports of goods	6 035	6 099	6 121	5 917	5 475	5 165	5 042	5 057
International trade—imports of goods	9 171	9 556	9 952	10 350	10 827	11 221	11 464	11 566
TREND ESTIMATES (% CHANGE FROM PREVIOUS QUARTER)								
Final consumption expenditure								
General government	0.8	1.1	1.2	1.1	0.8	0.8	0.7	0.5
Households	1.1	1.3	1.1	0.7	0.5	0.7	0.9	0.9
Gross fixed capital formation								
Private								
Dwellings	5.9	5.2	4.2	3.8	0.9	-1.4	-1.3	-0.9
Non-dwelling construction(b)	0.3	10.0	13.1	9.1	3.7	-0.6	-1.0	-0.3
Machinery and equipment	4.7	6.0	3.9	3.4	2.9	1.6	0.8	0.2
Livestock	—	-1.9	-8.2	-12.3	-12.5	1.8	12.3	11.7
Intangible fixed assets	-1.1	0.4	2.0	3.1	2.3	0.4	-0.8	-1.2
Ownership transfer costs	3.4	1.5	3.5	4.5	0.4	-3.5	-4.5	-2.3
Total private	3.7	5.4	5.0	4.2	2.0	-0.2	-0.5	-0.3
Public	5.6	1.7	0.1	0.1	5.9	6.8	2.7	-2.0
<b>State final demand</b>	<b>1.7</b>	<b>2.1</b>	<b>1.9</b>	<b>1.5</b>	<b>1.0</b>	<b>0.7</b>	<b>0.6</b>	<b>0.5</b>
International trade—exports of goods	0.3	1.1	0.4	-3.3	-7.5	-5.7	-2.4	0.3
International trade—imports of goods	2.8	4.2	4.1	4.0	4.6	3.6	2.2	0.9

(a) Reference year for chain volume measures is 2001–02.

(b) The series previously labelled 'Other buildings and structures' has been renamed 'Non-dwelling construction'.

(c) Trend estimates for aggregates are derived directly, rather than as the sum of components. As a result, the sum of the trend estimates of individual components of a particular aggregate will not sum to the overall trend estimate of the aggregate.

Source: Australian National Accounts: National Income, Expenditure and Product (cat. no. 5206.0); ABS data available on request, Australian National Accounts.

# 4

## ESTIMATED RESIDENT POPULATION AND COMPONENTS OF POPULATION CHANGE(a)(b)

Period	Population at end of period			Components of population change				% change from previous 12 months	
	Males	Females	Persons	Natural increase	Net overseas migration	Net interstate migration	Total increase	Victoria	Australia
	'000	'000	'000	'000	'000	'000	'000		
1997–98	2 287.0	2 350.8	4 637.8	27.7	19.3	–0.3	40.6	0.88	1.05
1998–99	2 309.4	2 377.0	4 686.4	27.1	24.7	2.5	48.6	1.05	1.15
1999–2000	2 335.5	2 405.8	4 741.3	27.7	27.0	5.2	54.9	1.17	1.20
2000–01	2 366.3	2 438.4	4 804.7	26.4	35.3	5.2	63.4	1.34	1.36
2001–02 r	2 393.6	2 463.7	4 857.2	27.9	20.3	4.4	52.5	1.09	1.17
2002–03	2 423.4	2 494.0	4 917.4	26.3	33.8	—	60.2	1.24	1.22
2001									
June	2 366.3	2 438.4	4 804.7	6.6	4.3	0.9	10.9	1.34	1.36
September r	2 372.7	2 444.1	4 816.8	7.1	3.8	1.2	12.0	1.26	1.33
December r	2 379.3	2 451.2	4 830.5	6.7	5.6	1.4	13.8	1.27	1.33
2002									
March r	2 389.3	2 459.5	4 848.9	7.4	8.9	2.0	18.3	1.15	1.22
June r	2 393.6	2 463.7	4 857.2	6.7	2.0	–0.2	8.4	1.09	1.17
September r	2 399.5	2 469.6	4 869.1	4.9	7.3	–0.3	11.9	1.09	1.14
December r	2 406.8	2 478.1	4 885.0	7.0	8.3	0.5	15.9	1.13	1.17
2003									
March r	2 417.9	2 488.5	4 906.3	7.8	12.9	0.7	21.4	1.19	1.18
June	2 423.4	2 494.0	4 917.4	6.6	5.3	–0.9	11.1	1.24	1.22

(a) ERP, natural increase, net overseas and net interstate migration data up to June 2001 are final.

(b) All ERP, natural increase, net overseas and net interstate migration data for September Quarter 2001 to June Quarter 2003 are preliminary.

Source: Australian Demographic Statistics (cat. no. 3101.0); ABS data available on request, Australian Demographic Statistics.

# 5

## REGISTRATION OF BIRTHS, DEATHS, MARRIAGES AND DIVORCES

Period	Births	Infant deaths(a)	Total deaths	Marriages	Divorces
	REGISTRATIONS (no.)				
1999–2000	59 733	304	31 992	27 558	12 818
2000–01	58 686	255	32 253	25 728	12 495
2001–02	r 60 507	r 266	r 32 625	25 003	13 851
2002–03	59 861	307	33 532	n.y.a.	n.y.a.
2001					
September qtr	r 15 648	r 57	r 8 564	3 618	3 756
December qtr	r 14 908	r 50	r 8 209	7 574	3 953
2002					
March qtr	r 14 990	r 68	r 7 548	8 194	3 081
June qtr	r 14 961	r 91	r 8 304	5 617	3 061
September qtr	14 474	79	9 583	4 079	3 368
December qtr	16 167	76	9 126	7 162	n.y.a.
2003					
March qtr	14 602	65	6 841	n.y.a.	n.y.a.
June qtr	14 618	87	7 982	n.y.a.	n.y.a.
	RATE PER 1,000 MEAN ESTIMATED RESIDENT POPULATION				
1999–2000	12.67	5.09	6.79	5.85	2.72
2000–01	12.30	4.35	6.76	5.39	2.62
2001–02	r 12.53	r 4.40	r 6.75	r 5.18	r 2.87
2002–03	12.25	5.13	6.86	n.y.a.	n.y.a.

(a) Rate for infant deaths is per 1,000 live births, and not per 1,000 mean population.

Source: Australian Demographic Statistics (cat. no. 3101.0).

## 6

## CIVILIAN LABOUR FORCE(a) — ALL SERIES

Month	Employed		Unemployed	Labour force	Unemployment rate		Participation rate	
	Full-time	Total			Victoria	Australia	Victoria	Australia
	'000	'000			'000	'000	%	%
ORIGINAL								
2002								
September	1 709.8	2 383.9	151.5	2 535.5	6.0	6.2	64.2	64.2
October	1 683.0	2 360.7	138.7	2 499.3	5.5	5.7	63.2	63.4
November	1 700.2	2 378.0	133.4	2 511.4	5.3	5.8	63.4	63.6
December	1 757.7	2 436.8	145.7	2 582.5	5.6	6.1	65.1	64.9
2003								
January	1 726.6	2 391.5	146.9	2 538.4	5.8	6.5	63.9	64.0
February	1 733.6	2 406.3	145.9	2 552.2	5.7	6.7	64.2	64.6
March	1 696.7	2 402.6	149.0	2 551.6	5.8	6.5	64.1	64.2
April	1 696.8	2 389.0	150.1	2 539.1	5.9	6.2	63.7	63.9
May	1 684.5	2 390.4	149.5	2 539.8	5.9	6.1	63.6	63.9
June	1 667.9	2 391.0	143.2	2 534.3	5.7	5.9	63.4	63.8
July	1 700.7	2 392.5	135.0	2 527.5	5.3	5.6	63.1	63.3
August	1 669.8	2 370.4	135.1	2 505.5	5.4	5.6	62.5	63.0
September	1 717.1	2 434.0	138.8	2 572.8	5.4	5.8	64.0	64.2
October	1 717.6	2 412.7	131.1	2 543.8	5.2	5.4	63.2	63.7
November	1 717.8	2 416.3	122.5	2 538.8	4.8	5.3	62.9	63.4
SEASONALLY ADJUSTED								
2002								
September	1 700.0	2 363.0	144.5	2 507.6	5.8	6.2	63.5	63.6
October	1 681.0	2 355.6	145.6	2 501.2	5.8	6.0	63.2	63.5
November	1 703.9	2 382.3	143.7	2 526.0	5.7	6.1	63.8	63.9
December	1 719.4	2 408.4	145.2	2 553.6	5.7	6.1	64.4	64.1
2003								
January	1 723.4	2 422.7	142.2	2 564.9	5.5	6.1	64.6	64.7
February	1 719.2	2 414.0	131.8	2 545.8	5.2	6.0	64.0	64.4
March	1 700.7	2 402.1	139.4	2 541.5	5.5	6.2	63.8	64.1
April	1 708.0	2 397.1	149.9	2 547.0	5.9	6.1	63.9	64.0
May	1 693.3	2 394.6	151.4	2 546.1	5.9	6.0	63.8	64.0
June	1 686.9	2 383.7	149.5	2 533.3	5.9	6.1	63.4	63.8
July	1 694.9	2 384.0	145.1	2 529.2	5.7	6.2	63.2	63.4
August	1 696.7	2 386.8	138.2	2 525.0	5.5	5.8	63.0	63.5
September	1 707.4	2 413.1	132.3	2 545.3	5.2	5.8	63.4	63.5
October	1 715.7	2 407.6	138.0	2 545.6	5.4	5.6	63.2	63.8
November	1 720.9	2 420.6	132.4	2 553.0	5.2	5.6	63.3	63.7
TREND ESTIMATES								
2002								
September	1 694.5	2 363.9	145.7	2 509.5	5.8	6.2	63.5	63.6
October	1 700.0	2 374.7	144.8	2 519.5	5.7	6.1	63.7	63.7
November	1 706.2	2 387.4	143.3	2 530.7	5.7	6.1	63.9	63.9
December	1 711.8	2 399.3	141.7	2 541.0	5.6	6.1	64.1	64.1
2003								
January	1 714.6	2 407.5	140.8	2 548.3	5.5	6.1	64.2	64.3
February	1 713.8	2 410.3	141.1	2 551.4	5.5	6.1	64.2	64.3
March	1 709.4	2 407.0	143.1	2 550.1	5.6	6.1	64.0	64.2
April	1 702.5	2 399.6	145.4	2 545.0	5.7	6.1	63.8	64.1
May	1 696.2	2 392.1	146.9	2 539.0	5.8	6.1	63.6	63.9
June	1 693.9	2 388.8	146.6	2 535.4	5.8	6.1	63.4	63.7
July	1 695.7	2 390.4	144.3	2 534.7	5.7	6.0	63.3	63.6
August	1 700.2	2 395.3	140.8	2 536.1	5.5	5.9	63.2	63.6
September	1 705.7	2 401.5	137.4	2 538.9	5.4	5.8	63.2	63.6
October	1 711.2	2 408.0	134.6	2 542.6	5.3	5.7	63.2	63.6
November	1 717.1	2 414.2	132.5	2 546.7	5.2	5.6	63.2	63.6

(a) Civilian population aged 15 years and over. From April 2001 the Labour Force Survey was conducted using a redesigned questionnaire containing additional data items and some minor definitional changes. Although the impact on core labour force series has been minor, revisions have been made to estimates previously published to ensure continuity. The revised series were released on 3 May 2001. *Information Paper: Implementing the Redesigned Labour Force Survey Questionnaire* (cat. no. 6295.0) contains further information about the questionnaire changes and the revised series. For details on the content of the redesigned questionnaire, see *Information Paper: Questionnaires Used in the Labour Force Survey* (cat. no. 6232.0).

Source: Labour Force, Australia (cat. no. 6202.0); Labour Force, Selected Summary Tables, Australia (cat. no. 6291.0.40.001).

Month	Employed			Unemployed	Labour force	Unemployment rate	Participation rate
	Full-time	Part-time	Total				
	'000	'000	'000	'000	'000	%	%
MELBOURNE MAJOR STATISTICAL REGION							
2002							
September	1 290.4	482.3	1 772.7	111.8	1 884.5	5.9	64.8
October	1 271.7	491.9	1 763.6	103.1	1 866.7	5.5	64.1
November	1 277.2	495.9	1 773.0	97.2	1 870.3	5.2	64.1
December	1 331.8	488.9	1 820.7	107.0	1 927.7	5.5	66.0
2003							
January	1 302.7	479.3	1 782.0	110.8	1 892.8	5.9	64.7
February	1 305.4	489.7	1 795.1	111.5	1 906.6	5.8	65.0
March	1 271.9	518.4	1 790.3	112.0	1 902.3	5.9	64.8
April	1 274.5	499.9	1 774.4	112.9	1 887.4	6.0	64.2
May	1 259.4	509.9	1 769.3	114.8	1 884.1	6.1	64.0
June	1 251.4	523.1	1 774.5	111.5	1 886.1	5.9	64.0
July	1 284.1	499.3	1 783.5	100.5	1 883.9	5.3	63.8
August	1 262.5	502.7	1 765.2	100.5	1 865.6	5.4	63.1
September	1 291.8	519.0	1 810.7	104.9	1 915.6	5.5	64.6
October	1 301.4	496.5	1 797.9	96.7	1 894.6	5.1	63.8
November	1 307.1	497.0	1 804.1	92.0	1 896.1	4.9	63.7
BARWON-WESTERN DISTRICT STATISTICAL REGION							
2002							
September	116.1	46.6	162.7	10.2	172.9	5.9	60.9
October	114.0	48.4	162.5	9.6	172.0	5.6	61.5
November	120.0	50.6	170.5	10.0	180.5	5.5	61.5
December	117.8	50.6	168.4	11.4	179.8	6.4	62.1
2003							
January	112.6	55.3	167.9	10.0	177.8	5.6	62.8
February	117.5	47.9	165.5	10.7	176.2	6.1	62.5
March	117.9	52.5	170.4	13.8	184.3	7.5	63.7
April	115.4	52.9	168.2	11.6	179.9	6.5	63.0
May	117.8	48.5	166.3	10.7	177.0	6.0	61.6
June	115.5	51.6	167.1	8.8	175.9	5.0	61.7
July	107.0	50.6	157.6	11.0	168.6	6.5	60.1
August	110.7	53.4	164.1	7.2	171.3	4.2	61.3
September	109.8	50.8	160.6	7.4	168.0	4.4	60.7
October	106.3	46.3	152.5	8.9	161.5	5.5	58.1
November	101.1	44.2	145.3	6.6	151.9	4.4	56.4
CENTRAL HIGHLANDS-WIMMERA STATISTICAL REGION							
2002							
September	62.2	31.4	93.6	5.8	99.4	5.9	62.6
October	62.1	32.5	94.7	3.5	98.2	3.6	61.3
November	63.9	25.4	89.2	6.0	95.2	6.3	58.6
December	62.1	27.0	89.1	5.9	95.0	6.2	59.0
2003							
January	58.5	24.9	83.5	7.4	90.9	8.2	57.3
February	56.0	27.8	83.8	5.8	89.6	6.4	57.0
March	60.8	28.6	89.5	5.2	94.7	5.5	60.3
April	58.9	27.6	86.5	5.6	92.1	6.1	59.2
May	58.1	27.2	85.3	5.6	90.9	6.1	58.9
June	59.7	31.0	90.7	4.8	95.5	5.0	60.2
July	61.7	29.9	91.6	5.3	96.9	5.5	60.8
August	59.6	29.5	89.1	6.7	95.8	7.0	59.4
September	62.4	30.3	92.7	6.2	98.9	6.3	61.4
October	62.7	30.2	93.0	6.6	99.6	6.7	64.1
November	64.8	32.9	97.7	6.3	104.0	6.0	62.9

For footnotes see end of table.

...continued

	Employed						
	Full-time	Part-time	Total	Unemployed	Labour force	Unemployment rate	Participation rate
Month	'000	'000	'000	'000	'000	%	%
LODDON-MALLEE STATISTICAL REGION							
2002							
September	79.7	40.5	120.3	6.7	127.0	5.3	63.0
October	80.5	36.1	116.7	7.1	123.7	5.7	59.1
November	81.7	35.3	117.0	6.5	123.6	5.3	64.8
December	81.1	33.4	114.5	7.6	122.1	6.3	66.3
2003							
January	84.0	31.5	115.4	5.7	121.1	4.7	63.4
February	88.7	31.4	120.0	4.9	125.0	4.0	64.3
March	89.4	33.0	122.4	5.4	127.8	4.2	64.2
April	94.7	40.3	135.0	7.4	142.4	5.2	65.7
May	100.0	41.2	141.2	7.2	148.4	4.9	67.9
June	93.1	38.5	131.6	8.5	140.1	6.1	66.1
July	91.6	37.9	129.4	5.3	134.7	3.9	63.6
August	89.6	40.8	130.4	7.3	137.7	5.3	63.5
September	90.1	40.4	130.5	7.2	137.7	5.2	64.4
October	88.6	40.8	129.4	8.5	138.0	6.2	62.6
November	86.7	39.8	126.5	6.4	132.9	4.8	60.9
GOULBURN-OVENS-MURRAY STATISTICAL REGION							
2002							
September	98.6	44.3	142.9	9.1	151.9	6.0	66.3
October	96.5	40.9	137.4	7.9	145.3	5.4	63.8
November	94.6	39.4	134.0	7.9	141.9	5.6	64.7
December	97.2	46.2	143.3	6.9	150.3	4.6	66.3
2003							
January	99.1	40.6	139.7	7.5	147.2	5.1	64.1
February	104.0	39.2	143.2	6.7	149.9	4.5	65.1
March	90.9	39.9	130.8	5.2	136.0	3.8	64.0
April	89.0	39.3	128.3	4.9	133.2	3.7	64.0
May	82.8	39.1	121.9	3.7	125.6	2.9	61.9
June	81.0	37.8	118.8	3.9	122.7	3.2	58.6
July	87.6	35.6	123.2	7.1	130.3	5.5	60.9
August	82.3	36.0	118.2	5.2	123.4	4.2	58.2
September	93.7	39.3	133.0	4.2	137.2	3.1	62.9
October	94.1	42.4	136.6	4.5	141.1	3.2	63.3
November	91.9	45.0	136.8	5.8	142.7	4.1	63.8
ALL GIPPSLAND STATISTICAL REGION							
2002							
September	62.8	29.1	91.9	7.9	99.7	7.9	59.8
October	58.1	27.8	85.9	7.5	93.4	8.1	56.9
November	62.9	31.3	94.2	5.8	100.0	5.8	56.6
December	67.8	33.0	100.8	6.8	107.6	6.3	59.0
2003							
January	69.8	33.3	103.0	5.5	108.6	5.1	59.6
February	61.9	36.8	98.6	6.3	104.9	6.0	57.6
March	65.8	33.4	99.2	7.4	106.6	6.9	56.2
April	64.3	32.2	96.5	7.6	104.1	7.3	57.3
May	66.6	39.8	106.3	7.6	113.9	6.6	61.3
June	67.1	41.2	108.4	5.7	114.0	5.0	61.7
July	68.7	38.6	107.2	5.8	113.0	5.1	60.9
August	65.1	38.3	103.4	8.2	111.6	7.4	61.1
September	69.3	37.2	106.5	8.8	115.3	7.6	62.7
October	64.4	38.9	103.3	5.8	109.1	5.3	61.1
November	66.2	39.6	105.8	5.4	111.2	4.9	61.6

(a) Civilian population aged 15 years and over. From April 2001 the Labour Force Survey was conducted using a redesigned questionnaire containing additional data items and some minor definitional changes. Although the impact on core labour force series has been minor, revisions have been made to estimates previously published to ensure continuity. The revised series were released on 3 May 2001. *Information Paper: Implementing the Redesigned Labour Force Survey Questionnaire* (cat. no. 6295.0) contains further information about the questionnaire changes and the revised series. For details on the content of the redesigned questionnaire, see *Information Paper: Questionnaires Used in the Labour Force Survey* (cat. no. 6232.0).

Source: *Labour Force, Selected Summary Tables, Australia* (cat. no. 6291.0.40.001).



## 8

## EMPLOYED PERSONS, BY INDUSTRY(a), NOVEMBER 2003

	Males	Females	Persons
<i>Industry division</i>	'000	'000	'000
Agriculture, forestry and fishing	57.3	24.1	81.4
Mining	4.7	1.0	5.7
Manufacturing	232.0	96.9	328.9
Electricity, gas and water supply	11.9	4.2	16.0
Construction	165.0	22.2	187.1
Wholesale trade	76.8	39.5	116.2
Retail trade	189.2	191.0	380.2
Accommodation, cafes and restaurants	51.2	58.4	109.6
Transport and storage	73.2	22.2	95.3
Communication services	38.0	18.0	56.0
Finance and insurance	44.7	40.6	85.3
Property and business services	172.2	133.3	305.5
Government administration and defence	40.1	43.6	83.7
Education	61.4	120.2	181.6
Health and community services	52.5	181.6	234.0
Cultural and recreational services	32.5	34.2	66.7
Personal and other services	45.8	37.0	82.8
<b>Total</b>	<b>1 348.3</b>	<b>1 067.9</b>	<b>2 416.3</b>

(a) From April 2001 the Labour Force Survey was conducted using a redesigned questionnaire containing additional items and some minor definitional changes. Revisions have been made to core labour force estimates to ensure continuity. However, counts of employed persons by industry, being non-core data items, have not been revised. Thus data from April 2001 onwards are not strictly comparable with earlier unrevised data. Further information is contained in footnotes to Tables 6 and 7.

Source: ABS data available on request, Labour Force.

Month	Preferred to work more hours					Proportion of part-time workers preferring to work more hours
	Preferred not to work more hours '000	Had actively looked for more hours and were available to work more hours '000	Wanted to work full-time '000	All part-time workers who preferred to work more hours '000	Total part-time workers '000	
MALES						
2002						
August	131.3	27.7	20.8	64.2	195.5	32.8
November	126.0	25.1	21.7	65.8	191.8	34.3
2003						
February	110.2	31.3	25.3	68.2	178.4	38.2
May	138.4	26.6	20.3	58.4	196.7	29.7
August	138.7	25.9	21.2	64.2	202.9	31.6
November	130.2	27.9	22.7	81.4	211.6	38.5
FEMALES						
2002						
August	384.3	33.8	20.3	99.4	483.7	20.6
November	376.3	31.9	21.0	109.8	486.0	22.6
2003						
February	378.5	42.0	26.2	115.9	494.3	23.4
May	395.6	39.7	28.2	113.5	509.1	22.3
August	395.9	31.7	20.4	101.8	497.7	20.5
November	371.0	32.5	21.1	115.8	486.9	23.8
PERSONS						
2002						
August	515.6	61.5	41.2	163.6	679.2	24.1
November	502.3	56.9	42.7	175.6	677.8	25.9
2003						
February	488.7	73.3	51.5	184.0	672.7	27.4
May	534.0	66.3	48.5	171.9	705.8	24.3
August	534.6	57.6	41.6	166.0	700.6	23.7
November	501.2	60.5	43.8	197.3	698.5	28.2

(a) Civilian population aged 15 years and over.

Source: ABS data available on request, Labour Force.

# 10

## DURATION OF UNEMPLOYMENT, BY SEX AND MAJOR STATISTICAL REGION

Month	Melbourne MSR			Balance of Victoria MSR			Victoria		
	Males	Females	Persons	Males	Females	Persons	Males	Females	Persons
	'000	'000	'000	'000	'000	'000	'000	'000	'000
NUMBER OF PERSONS UNEMPLOYED FOR UNDER 13 WEEKS									
2002									
September	29.5	24.8	54.3	6.4	10.1	16.5	35.9	34.9	70.8
October	29.9	24.1	53.9	5.8	6.7	12.5	35.6	30.8	66.4
November	25.5	24.5	49.9	6.0	6.1	12.1	31.5	30.6	62.1
December	28.4	26.0	54.4	9.7	6.9	16.6	38.1	32.9	71.0
2003									
January	34.8	24.6	59.4	7.8	9.9	17.7	42.6	34.5	77.1
February	32.7	30.5	63.2	8.6	8.2	16.9	41.3	38.8	80.1
March	32.5	34.3	66.8	9.1	10.4	19.5	41.6	44.7	86.3
April	26.5	29.7	56.2	9.1	7.0	16.1	35.6	36.7	72.3
May	27.9	24.3	52.2	8.8	6.1	14.9	36.7	30.4	67.1
June	23.7	26.8	50.5	7.2	*3.9	11.1	30.9	30.7	61.6
July	21.9	21.4	43.3	7.3	7.9	15.2	29.1	29.4	58.5
August	20.7	22.8	43.5	7.5	9.5	16.9	28.2	32.3	60.5
September	26.6	23.8	50.4	7.0	8.0	15.0	33.6	31.8	65.4
October	20.2	22.9	43.1	10.5	*3.6	14.1	30.7	26.5	57.2
November	21.4	24.9	46.3	6.7	6.7	13.4	28.1	31.6	59.6
NUMBER OF PERSONS UNEMPLOYED FOR 13 AND UNDER 52 WEEKS									
2002									
September	19.2	13.4	32.6	6.3	8.0	14.3	25.5	21.4	46.9
October	17.2	10.5	27.7	7.6	6.4	14.0	24.8	16.9	41.7
November	16.7	10.8	27.5	8.8	5.1	13.9	25.5	15.9	41.4
December	17.7	13.0	30.7	7.0	5.0	12.0	24.7	18.0	42.7
2003									
January	17.4	12.4	29.8	7.8	*3.2	11.0	25.2	15.6	40.9
February	16.2	11.3	27.6	7.3	*3.3	10.6	23.5	14.6	38.2
March	13.3	14.2	27.5	4.8	*3.8	8.6	18.1	17.9	36.1
April	21.6	18.2	39.7	7.1	*4.1	11.1	28.6	22.3	50.9
May	22.1	20.5	42.6	7.0	5.3	12.4	29.1	25.8	55.0
June	23.5	17.6	41.1	7.7	4.4	12.0	31.1	22.0	53.1
July	19.4	18.5	37.9	7.9	*3.2	11.1	27.3	21.7	49.0
August	19.7	13.1	32.8	7.3	5.4	12.7	27.0	18.5	45.5
September	16.1	13.6	29.7	8.3	5.1	13.4	24.4	18.7	43.1
October	17.6	13.3	30.9	5.0	8.7	13.7	22.6	22.0	44.5
November	15.3	10.5	25.8	4.8	6.7	11.5	20.2	17.2	37.4

...continued

Month	Melbourne MSR			Balance of Victoria MSR			Victoria		
	Males	Females	Persons	Males	Females	Persons	Males	Females	Persons
	'000	'000	'000	'000	'000	'000	'000	'000	'000
NUMBER OF PERSONS UNEMPLOYED FOR 52 WEEKS AND OVER									
2002									
September	18.1	6.8	24.9	6.0	*3.0	8.9	24.0	9.8	33.8
October	15.5	6.0	21.5	6.5	*2.6	9.0	22.0	8.6	30.5
November	13.6	6.2	19.8	5.4	4.7	10.1	19.1	10.9	30.0
December	14.4	7.5	21.8	5.9	*4.3	10.1	20.2	11.8	32.0
2003									
January	13.0	8.5	21.5	5.4	*1.9	7.4	18.4	10.5	28.9
February	14.1	6.6	20.7	5.6	*1.4	6.9	19.7	8.0	27.6
March	10.1	7.6	17.7	6.2	*2.6	8.9	16.4	10.2	26.6
April	11.9	5.1	17.0	7.7	*2.2	9.9	19.6	7.3	26.9
May	12.5	7.5	20.0	*4.3	*3.1	7.4	16.8	10.6	27.4
June	11.3	8.6	20.0	5.0	*3.5	8.5	16.4	12.1	28.5
July	12.7	6.5	19.3	5.1	*3.1	8.2	17.8	9.6	27.5
August	15.5	8.6	24.1	*3.9	*1.2	5.1	19.4	9.8	29.1
September	14.9	9.9	24.8	*3.0	*2.5	5.5	17.9	12.3	30.2
October	12.1	10.6	22.7	*4.2	*2.5	6.7	16.3	13.1	29.4
November	10.8	9.1	19.9	*4.1	*1.5	5.6	14.9	10.6	25.5
TOTAL UNEMPLOYED PERSONS									
2002									
September	66.8	45.0	111.8	18.6	21.1	39.7	85.5	66.1	151.5
October	62.5	40.6	103.1	19.9	15.7	35.5	82.4	56.3	138.7
November	55.8	41.5	97.2	20.2	15.9	36.2	76.0	57.4	133.4
December	60.5	46.5	107.0	22.5	16.2	38.7	83.0	62.7	145.7
2003									
January	65.2	45.6	110.8	21.0	15.1	36.1	86.3	60.6	146.9
February	63.0	48.5	111.5	21.5	12.9	34.4	84.5	61.4	145.9
March	56.0	56.0	112.0	20.2	16.8	36.9	76.2	72.8	149.0
April	60.0	53.0	112.9	23.9	13.3	37.2	83.8	66.3	150.1
May	62.5	52.3	114.8	20.2	14.5	34.7	82.7	66.8	149.5
June	58.5	53.0	111.5	19.9	11.8	31.7	78.4	64.8	143.2
July	54.1	46.5	100.5	20.3	14.2	34.5	74.3	60.7	135.0
August	55.9	44.5	100.5	18.6	16.1	34.7	74.5	60.6	135.1
September	57.6	47.3	104.9	18.4	15.5	33.8	76.0	62.8	138.8
October	49.9	46.8	96.7	19.7	14.8	34.5	69.5	61.6	131.1
November	47.5	44.5	92.0	15.6	14.9	30.5	63.1	59.4	122.5

Source: ABS data available on request, Labour Force.

# 11

## JOB VACANCIES: ORIGINAL(a)

Victoria			
Sector			
	Job vacancies	Public	Private
Month	'000	'000	'000
2002			
February	28.1	4.0	24.1
May	24.9	3.1	21.8
August	29.8	3.3	26.5
November	22.0	3.0	19.0
2003			
February	27.2	3.6	23.6
May	22.9	3.2	19.7
August	29.3	2.8	26.5
November	26.9	2.9	23.9

(a) From November 2003, number of employees is no longer collected in the Job Vacancies Survey. Consequently job vacancy rates from November 2003 are no longer presented in the Job Vacancies publication (cat. no. 6354.0). A job vacancy rate series, based on estimates of the number of employees from the Labour Force Survey, is available on request. Inquiries should be made to Manpreet Singh on (08) 9360 5304.

Source: Job Vacancies, Australia (cat. no. 6354.0).

# 12

## INDUSTRIAL DISPUTES CAUSING STOPPAGE OF WORK

INDUSTRIAL DISPUTES ARISING OUTSIDE OF WORK										
Month	Disputes		Employees involved		Working days lost					
	Commenced in period	Total	Newly involved	Total	Manufacturing	Construction	Education, health, community services	Other industries	Total	Rate per thousand employees, 12 months ended
no.	no.	'000	'000	'000	'000	'000	'000	'000	'000	no.
2002										
June	22	30	2.2	2.7	3.1	1.2	0.1	0.3	4.8	63
July	30	37	4.1	5.3	2.8	4.4	—	0.7	7.9	59
August	17	25	4.1	7.7	1.0	2.9	—	0.8	5.2	55
September	33	36	3.5	4.3	4.0	1.2	0.1	0.5	5.8	56
October	20	25	4.4	6.6	5.3	5.6	—	0.5	11.4	50
November	25	31	3.4	4.1	3.5	3.1	0.2	0.1	6.9	46
December	12	17	2.8	4.0	0.5	1.5	—	2.1	4.2	46
2003										
January	11	14	1.4	2.1	0.4	0.9	—	0.7	2.0	46
February	30	35	4.7	7.5	r 1.6	r 3.3	—	1.2	9.5	47
March	18	29	4.6	5.9	2.7	7.2	—	0.1	10.9	44
April	12	19	1.4	4.4	r 2.1	r 1.5	—	0.7	r 4.3	42
May	17	26	r 4.5	r 4.9	9.0	2.1	—	0.5	11.7	41
June	r 18	r 25	r 6.4	r 7.1	r 11.3	1.7	—	1.0	r 14.0	45
July	24	30	4.2	6.0	10.3	2.3	—	0.5	13.7	48
August	24	30	7.5	8.6	11.1	5.7	—	—	17.1	53
September	24	31	21.1	21.9	13.3	1.5	n.p.	n.p.	30.1	65

Source: Industrial Disputes, Australia (cat. no. 6321.0); ABS data available on request, Industrial Disputes.

	Males			Females			Persons		
	Full-time adult ordinary time earnings	Full-time adult total earnings	All males total earnings	Full-time adult ordinary time earnings	Full-time adult total earnings	All females total earnings	Full-time adult ordinary time earnings	Full-time adult total earnings	All employees total earnings
ORIGINAL (\$)									
2002									
May	915.40	969.10	836.10	794.60	806.30	541.00	874.40	913.80	694.10
August	938.20	985.70	851.90	799.00	811.10	561.50	889.60	924.80	713.10
November	942.70	1 000.20	859.00	796.60	810.80	554.60	890.70	932.80	710.90
2003									
February	954.20	1 002.90	878.00	807.30	823.00	569.60	902.00	939.00	726.60
May	976.00	1 031.10	888.60	835.50	849.70	581.70	926.90	967.70	741.70
August	983.00	1 044.10	906.90	834.80	848.80	583.20	931.90	976.70	752.50
SEASONALLY ADJUSTED (\$)									
2002									
May	916.30	968.10	835.40	795.50	808.00	541.40	875.20	914.00	694.30
August	937.30	986.20	855.00	797.60	809.60	557.60	888.10	923.90	712.60
November	948.90	1 002.30	861.10	795.40	807.70	557.90	895.10	934.00	714.60
2003									
February	948.30	1 001.60	874.10	809.10	826.20	570.30	898.60	938.80	723.60
May	977.10	1 030.20	887.60	836.60	851.60	582.10	927.90	968.00	741.80
August	981.70	1 044.30	909.90	833.20	847.00	578.90	929.90	975.50	751.80
TREND ESTIMATES (\$)									
2002									
May	917.90	970.50	836.60	791.40	803.70	543.10	874.40	913.20	695.60
August	934.50	986.40	852.20	795.80	808.20	552.40	886.00	924.10	707.60
November	946.10	997.30	862.70	801.20	814.80	562.10	895.00	932.90	717.00
2003									
February	957.30	1 010.60	874.90	812.70	827.60	570.30	906.20	945.90	726.90
May	970.00	1 026.10	889.80	826.80	842.00	577.30	919.60	961.40	738.90
August	983.50	1 043.10	906.80	840.00	854.80	583.20	933.40	977.40	751.80
PERCENTAGE CHANGE (FROM MAY 2003 TO AUGUST 2003)									
Original	0.7	1.3	2.1	-0.1	-0.1	0.3	0.5	0.9	1.5
Seasonally Adjusted	0.5	1.4	2.5	-0.4	-0.5	-0.6	0.2	0.8	1.3
Trend	1.4	1.7	1.9	1.6	1.5	1.0	1.5	1.7	1.7
PERCENTAGE CHANGE (FROM AUGUST 2002 TO AUGUST 2003)									
Original	4.8	5.9	6.5	4.5	4.6	3.9	4.8	5.6	5.5
Seasonally Adjusted	4.7	5.9	6.4	4.5	4.6	3.8	4.7	5.6	5.5
Trend	5.2	5.7	6.4	5.5	5.8	5.6	5.3	5.8	6.2

(a) Movements in average weekly earnings can be affected by both changes in the level of earnings per employee and changes in the composition of the labour force. For example, changes in the proportions of full-time, part-time, casual and junior employees and variations in the distribution of occupations can affect movements in earnings series. For more information, see paragraphs 17 and 18 of the Explanatory Notes in the source publication.

Source: Average Weekly Earnings, Australia (cat. no. 6302.0).

# 14

## WAGE COST INDEXES(a)

Period	Total hourly rates of pay excluding bonuses		Ordinary time hourly rates of pay excluding bonuses	
	Index number	% change from previous period	Index number	% change from previous period
2000-01	110.8	3.4	110.8	3.5
2001-02	114.7	3.5	114.6	3.4
2002-03	118.8	3.6	118.7	3.6
2000				
September	109.4	1.0	109.4	1.1
December	110.4	0.9	110.3	0.8
2001				
March	111.2	0.7	111.2	0.8
June	112.2	0.9	112.1	0.8
September	113.6	1.2	113.5	1.2
December	114.2	0.5	114.2	0.6
2002				
March	115.0	0.7	114.9	0.6
June	116.0	0.9	115.9	0.9
September	117.6	1.4	117.5	1.4
December	118.5	0.8	118.4	0.8
2003				
March	119.2	0.6	119.1	0.6
June	120.0	0.7	119.9	0.7
September	121.5	1.3	121.4	1.3

(a) Base of each index: September quarter 1997 = 100.0.

Source: Wage Cost Index, Australia (cat. no. 6345.0).

# 15

## CONSUMER PRICE INDEX(a), BY GROUP — MELBOURNE

Group	Sep qtr 2002	Dec qtr 2002	Mar qtr 2003	Jun qtr 2003	Sept qtr 2003	% change from Jun qtr 2003 to Sept qtr 2003		% change from Sept qtr 2002 to Sept qtr 2003	
						Melbourne	Weighted average of eight capital cities	Melbourne	Weighted average of eight capital cities
Food	145.1	146.7	148.9	149.1	149.0	-0.1	-0.3	2.7	3.0
Alcohol and tobacco	207.4	208.7	210.8	212.2	217.2	2.4	1.9	4.7	3.8
Clothing and footwear	113.7	114.9	114.5	114.2	115.1	0.8	-0.4	1.2	0.3
Housing	104.8	105.0	107.4	108.4	109.6	1.1	1.8	4.6	4.6
Household furnishings, supplies and services	120.6	122.4	120.7	121.7	121.8	0.1	0.1	1.0	0.8
Health	187.0	189.4	196.3	202.3	201.8	-0.2	—	7.9	7.2
Transportation	138.0	139.9	143.1	139.4	140.9	1.1	1.4	2.1	1.8
Communication	107.8	108.3	108.6	108.7	109.5	0.7	0.7	1.6	1.7
Recreation	131.2	131.7	132.1	131.3	130.8	-0.4	-1.1	-0.3	-1.4
Education	197.6	198.3	207.7	207.6	207.9	0.1	0.1	5.2	4.9
Miscellaneous	167.7	168.5	169.1	169.3	173.6	2.5	1.4	3.5	2.7
<b>All groups</b>	<b>137.8</b>	<b>139.0</b>	<b>140.9</b>	<b>140.9</b>	<b>141.8</b>	<b>0.6</b>	<b>0.6</b>	<b>2.9</b>	<b>2.6</b>

(a) Base of each index: 1989-90 = 100.0.

Source: Consumer Price Index, Australia (cat. no. 6401.0).

# 16

## HOUSE PRICE INDEXES(a) — MELBOURNE AND WEIGHTED AVERAGE OF EIGHT CAPITAL CITIES

Period	Melbourne				Weighted average of eight capital cities			
	Established homes		Project homes		Established homes		Project homes	
	Index number	% change from previous period	Index number	% change from previous period	Index number	% change from previous period	Index number	% change from previous period
2000–01	159.1	10.0	136.9	12.2	152.8	7.4	134.9	11.8
2001–02	193.7	21.7	142.1	3.8	178.0	16.5	138.1	2.4
2002–03	216.4	11.7	147.2	3.6	209.9	17.9	144.1	4.3
2002								
June	206.2	7.7	143.4	0.7	189.5	4.9	139.9	1.0
September	207.3	0.5	143.9	0.3	196.7	3.8	141.3	1.0
December	213.6	3.0	144.9	0.7	206.1	4.8	142.5	0.8
2003								
March	217.7	1.9	148.1	2.2	213.1	3.4	144.7	1.5
June	226.9	4.2	151.8	2.5	223.8	5.0	147.9	2.2
September	231.3	1.9	152.5	0.5	231.3	3.4	151.2	2.2

(a) Base of each index: 1989–90 = 100.0.

Source: House Price Indexes (cat. no. 6416.0).

# 17

## PRICE INDEXES OF MATERIALS USED IN BUILDING(a) — MELBOURNE

Group					% change from Jun qtr 2003 to Sep qtr 2003		% change from Sep qtr 2002 to Sep qtr 2003	
	Dec qtr 2002	Mar qtr 2003	Jun qtr 2003	Sep qtr 2003	Melbourne	Weighted average of six state capital cities	Melbourne	Weighted average of six state capital cities
<b>House building (all groups)</b>	<b>128.1</b>	<b>128.7</b>	<b>129.6</b>	<b>130.1</b>	<b>0.4</b>	<b>0.6</b>	<b>2.4</b>	<b>3.2</b>
Other than house building								
Structural timber	124.1	124.9	124.4	124.8	0.3	0.1	0.1	1.1
Clay bricks	134.8	134.4	134.8	137.8	2.2	2.6	5.0	7.4
Ready mixed concrete	126.0	127.3	132.7	132.8	0.1	0.3	11.1	9.7
Precast concrete products	164.9	168.3	172.0	174.3	1.3	1.0	5.9	5.5
Steel decking and cladding	107.1	112.6	113.8	112.6	–1.1	0.2	5.1	4.9
Structural steel	107.1	107.5	107.5	107.2	–0.3	1.0	1.0	5.3
Reinforcing steel bar, mesh, etc.	91.9	93.6	97.7	97.2	–0.5	0.2	7.4	6.3
Aluminium windows	117.9	123.5	125.2	126.3	0.9	0.3	7.1	3.5
Fabricated steel products	131.4	133.5	133.6	141.4	5.8	3.2	9.4	6.0
Builders' hardware	138.0	139.9	140.2	140.2	—	0.2	1.6	3.5
Sand and aggregate	141.7	146.1	146.1	147.4	0.9	1.2	14.5	10.4
Carpet	109.6	110.9	112.8	112.2	–0.5	–0.5	5.2	4.6
Paint and other coatings	193.1	193.1	196.4	191.8	–2.3	1.5	–0.7	5.9
Non-ferrous pipes and fittings	135.5	135.5	135.5	135.5	—	0.5	—	0.7
All plumbing materials	135.9	135.7	137.5	136.9	–0.4	–0.1	1.2	1.4
All groups excluding electrical materials and mechanical services	122.3	124.3	126.0	126.5	0.4	0.6	4.7	4.7
All electrical materials	116.5	118.0	119.7	119.5	–0.2	–0.1	1.4	2.3
All mechanical services	124.6	124.6	124.7	125.1	0.3	0.3	0.7	0.9
<b>All groups</b>	<b>121.8</b>	<b>123.4</b>	<b>124.8</b>	<b>125.2</b>	<b>0.3</b>	<b>0.5</b>	<b>3.6</b>	<b>3.9</b>

(a) Base of each index: 1989–90 = 100.0.

Source: Producer Price Indexes, Australia (cat. no. 6427.0); ABS data available on request, Producer Price Indexes.



<i>Manufacturing subdivision or group</i>	<i>Jun qtr 2002</i>	<i>Sep qtr 2002</i>	<i>Dec qtr 2002</i>	<i>Mar qtr 2003</i>	<i>Jun qtr 2003</i>	<i>Sep qtr 2003</i>	<i>% change from Jun qtr 2003 to Sep qtr 2003</i>	<i>% change from Sep qtr 2002 to Sep qtr 2003</i>
Food, beverages and tobacco	136.7	128.6	135.8	140.2	139.5	137.0	-1.8	6.5
Textiles, clothing, footwear & leather								
Textiles and textile products	109.3	109.1	112.1	111.8	108.2	105.4	-2.6	-3.4
Knitting mills and clothing	107.6	108.2	108.3	107.7	106.2	105.6	-0.6	-2.4
Footwear	131.9	130.3	130.1	130.8	131.1	125.4	-4.3	-3.8
Leather and leather products	103.0	99.7	103.9	99.2	98.2	88.4	-10.0	-11.3
Wood & paper products								
Sawmilling and timber products	135.2	131.5	130.1	129.9	128.3	127.2	-0.9	-3.3
Paper and paper products	107.8	106.4	104.5	102.9	105.5	105.5	—	-0.8
Printing and publishing	119.8	118.8	116.9	116.9	115.1	111.6	-3.0	-6.1
Petroleum, coal, chemical & assoc. products								
Petroleum and coal products	180.4	189.0	184.5	207.9	171.9	160.2	-6.8	-15.2
Chemicals	118.4	119.3	118.6	117.9	117.3	116.8	-0.4	-2.1
Rubber and plastics	118.3	122.3	123.4	122.8	125.6	118.7	-5.5	-2.9
Non-metallic mineral products	119.4	119.8	122.7	123.2	126.7	127.6	0.7	6.5
Metal products								
Basic metal products	106.4	105.8	104.8	106.0	101.8	101.3	-0.5	-4.3
Fabricated metal products	109.9	110.4	110.5	112.0	111.1	111.9	0.7	1.4
Machinery and equipment								
Transport equipment and parts	124.2	124.9	125.4	125.3	123.5	121.6	-1.5	-2.6
Electronic equipment & other machinery	106.9	107.5	107.4	107.9	107.1	106.5	-0.6	-0.9
Other manufacturing	123.3	124.3	124.2	124.3	123.1	121.2	-1.5	-2.5
<b>All manufacturing</b>	<b>132.6</b>	<b>130.6</b>	<b>131.3</b>	<b>135.8</b>	<b>129.9</b>	<b>126.7</b>	<b>-2.5</b>	<b>-3.0</b>

(a) Base of each index: 1989-90 = 100.0.

Source: *Producer Price Indexes, Australia* (cat. no. 6427.0).

<i>Manufacturing subdivision or group</i>	<i>Jun qtr 2002</i>	<i>Sep qtr 2002</i>	<i>Dec qtr 2002</i>	<i>Mar qtr 2003</i>	<i>Jun qtr 2003</i>	<i>Sep qtr 2003</i>	<i>% change from Jun qtr 2003 to Sep qtr 2003</i>	<i>% change from Sep qtr 2002 to Sep qtr 2003</i>
Food, beverages and tobacco	139.4	138.2	139.5	141.3	140.6	138.8	-1.3	0.4
Textiles, clothing, footwear & leather								
Textiles and textile products	114.9	115.0	123.4	124.1	118.5	117.7	-0.7	2.3
Knitting mills, clothing, footwear and leather	122.8	124.2	124.8	124.5	125.5	124.8	-0.6	0.5
Wood & paper products								
Log sawmilling and other wood products	133.4	133.9	134.0	134.9	137.4	138.2	0.6	3.2
Paper and paper products	117.0	117.6	119.5	117.0	117.6	118.1	0.4	0.4
Printing, publishing and recorded media	155.7	156.1	154.6	155.7	154.2	156.1	1.2	—
Petroleum, coal, chemical & assoc. products								
Petroleum and coal products	163.5	161.9	173.2	189.4	165.8	163.7	-1.3	1.1
Chemicals	113.3	114.7	115.1	115.0	115.7	114.3	-1.2	-0.3
Rubber and plastics	124.3	125.3	125.4	122.7	124.7	124.8	0.1	-0.4
Non-metallic mineral products	121.6	123.1	125.6	126.7	127.8	128.5	0.5	4.4
Metal products								
Basic metal products	105.7	106.3	106.1	105.4	101.3	101.2	-0.1	-4.8
Fabricated metal products	119.7	120.5	121.8	122.6	123.9	124.4	0.4	3.2
Machinery and equipment								
Transport equipment and parts	128.9	129.0	130.0	129.9	128.7	128.5	-0.2	-0.4
Electronic equipment and other machinery	113.9	114.0	114.0	113.9	113.3	112.8	-0.4	-1.1
Other manufacturing	132.3	128.6	127.9	128.2	126.9	126.4	-0.4	-1.7
<b>All manufacturing</b>	<b>129.3</b>	<b>129.0</b>	<b>130.5</b>	<b>132.1</b>	<b>129.5</b>	<b>128.9</b>	<b>-0.5</b>	<b>-0.1</b>

(a) Base of each index: 1989-90 = 100.0.

Source: Producer Price Indexes, Australia (cat. no. 6427.0).

<i>Period</i>	<i>Live animals, animal products</i>	<i>Vegetable products</i>	<i>Products of chemical or allied industries</i>	<i>Wool and cotton fibres</i>	<i>Gold, diamonds and coin</i>	<i>Motor vehicles, aircraft and vessels</i>	<i>All groups</i>
2000-01	126.4	99.8	120.1	74.3	106.0	127.0	114.8
2001-02	142.0	107.6	113.0	80.0	114.4	131.8	116.7
2002-03	124.5	104.7	99.1	87.9	117.8	126.5	111.7
2000							
September	116.6	90.9	114.9	69.6	102.1	121.0	107.9
December	124.1	98.4	122.5	71.9	107.9	128.0	115.8
2001							
March	127.5	102.9	121.0	74.8	105.9	127.8	115.3
June	137.2	107.1	121.9	80.8	108.1	131.3	120.3
September	140.1	107.2	118.6	79.4	112.6	132.6	119.2
December	146.8	109.5	115.3	75.7	113.1	133.2	117.2
2002							
March	142.8	110.5	111.3	83.0	115.0	131.9	116.4
June	138.2	103.1	106.8	81.9	116.9	129.4	113.8
September	131.3	102.9	105.7	79.8	117.7	129.6	113.6
December	128.3	106.7	100.1	89.5	118.6	129.8	114.0
2003							
March	123.0	109.8	97.5	95.2	122.1	126.2	113.2
June	115.5	99.2	92.9	87.1	112.9	120.5	105.8
September	113.2	97.7	92.1	78.0	112.7	118.7	102.8

(a) Base of each index: 1989-90 = 100.0.

(b) AHECC Sections are 01, 02, 06, 11, 14 and 17.

Source: International Trade Price Indexes, Australia (cat. no. 6457.0).

## 21

### PRIVATE NEW CAPITAL EXPENDITURE, BY TYPE OF ASSET AND INDUSTRY — ORIGINAL

Period	Selected industries				Type of asset		
	Mining	Manufacturing	Other selected industries	Total	Buildings and structures	Equipment, plant and machinery	All assets
	\$m	\$m	\$m	\$m	\$m	\$m	\$m
2000–01	389	3 400	7 209	10 997	2 385	8 612	10 997
2001–02	697	3 280	7 378	11 355	1 847	9 508	11 355
2002–03	720	r 3 439	r 8 712	r 12 869	r 2 352	r 10 518	r 12 869
2002							
June	207	953	1 940	3 100	501	2 598	3 100
September	208	857	2 079	3 144	592	2 552	3 144
December	202	950	2 499	3 650	624	3 026	3 650
2003							
March	155	737	2 060	2 952	531	2 421	2 952
June	155	r 895	r 2 074	r 3 123	r 605	r 2 519	r 3 123
September	144	791	2 273	3 208	645	2 563	3 208

Source: Private New Capital Expenditure and Expected Expenditure, Australia (cat. no. 5625.0); ABS data available on request, Survey of New Capital Expenditure.

## 22

### PRIVATE NEW CAPITAL EXPENDITURE, BY TYPE OF ASSET — SEASONALLY ADJUSTED AND TREND

Period	Seasonally adjusted				Trend			
	All assets				All assets			
	Buildings and structures	Equipment, plant and machinery		% change from previous period	Buildings and structures	Equipment, plant and machinery		% change from previous period
	\$m	\$m	\$m		\$m	\$m	\$m	
2000–01	2 380	8 630	11 010	–4.1	2 334	8 588	10 922	–5.1
2001–02	1 847	9 510	11 357	3.2	1 932	9 504	11 436	4.7
2002–03	2 356	10 521	12 877	13.4	2 345	10 378	12 723	11.3
2002								
June	499	2 499	2 998	4.5	508	2 503	3 011	4.2
September	564	2 591	3 155	5.2	547	2 591	3 138	4.2
December	576	2 802	3 378	7.1	587	2 626	3 213	2.4
2003								
March	617	2 698	3 315	–1.9	602	2 601	3 203	–0.3
June	599	2 430	3 029	–8.6	609	2 560	3 169	–1.1
September	616	2 600	3 216	6.2	615	2 540	3 155	–0.4

Source: Private New Capital Expenditure and Expected Expenditure, Australia (cat. no. 5625.0).

## 23

### COMMERCIAL FINANCE COMMITMENTS(a)

Period	Fixed loan facilities							Total commercial finance
	Construction	Purchase of real property	Purchase of motor vehicles	Purchase of other plant & equipment	Other	Total	Revolving credit facilities	
	\$m	\$m	\$m	\$m	\$m	\$m	\$m	\$m
2000–01	1 846.5	7 529.9	1 647.5	1 032.9	12 558.6	24 615.4	19 569.6	44 185.0
2001–02	2 521.0	11 781.5	2 279.4	1 210.7	11 746.2	29 538.9	17 088.8	46 627.7
2002–03	4 681.1	13 896.2	2 338.1	1 106.2	20 671.3	42 693.0	18 119.2	60 812.2
2002								
October	482.1	1 114.6	204.6	93.6	2 842.8	4 737.8	1 605.6	6 343.3
November	678.2	1 084.3	182.3	83.8	1 332.9	3 361.6	1 329.6	4 691.1
December	551.9	1 181.5	186.3	75.0	2 336.5	4 331.2	2 024.1	6 355.2
2003								
January	210.4	915.8	178.1	49.4	1 229.5	2 583.2	1 409.4	3 992.7
February	366.8	1 016.6	188.6	73.9	1 135.2	2 781.0	1 461.6	4 242.6
March	296.2	1 177.8	193.9	86.2	1 803.9	3 558.0	1 208.0	4 766.1
April	147.6	1 075.0	182.1	79.4	1 092.6	2 576.6	1 140.0	3 716.5
May	502.5	1 203.5	214.8	72.8	1 512.7	3 506.3	1 411.8	4 918.1
June	527.2	1 583.9	226.5	83.5	2 050.1	4 471.2	1 565.6	6 036.7
July	297.2	1 501.8	215.0	89.5	2 393.1	4 496.6	1 802.8	6 299.4
August	340.6	1 366.5	184.9	71.9	1 841.8	3 805.7	1 958.9	5 764.6
September	237.9	1 396.4	183.1	86.0	1 839.9	3 743.2	1 348.6	5 091.8
October	539.3	1 560.2	173.7	107.8	2 125.7	4 506.8	2 693.5	7 200.2

(a) Includes wholesale finance.

Source: ABS data available on request, Commercial Finance.

## 24

### LEASE FINANCE COMMITMENTS(a), BY PURPOSE

Period	New cars & station wagons(b)	Used cars & station wagons(b)	New trucks	Used trucks	Trailers, buses & other motor vehicles(c)	Agricultural, Construction & Manufacturing equipment	Office equipment	Other goods(d)	Total lease finance
	\$m	\$m	\$m	\$m	\$m	\$m	\$m	\$m	\$m
2000–01	353.3	121.9	53.6	18.8	20.4	136.2	595.1	108.7	1 407.9
2001–02	494.2	179.4	69.0	15.6	39.4	155.2	616.1	86	1 654.9
2002–03	546.3	146.1	67.9	12.2	22.3	118.2	492.4	101.1	1 526.3
2002									
October	43.6	12.7	3.3	1.0	4.1	6.3	49.0	7.4	127.4
November	41.8	11.5	6.2	0.6	1.6	8.3	36.4	5.3	111.7
December	50.7	13.6	4.8	0.6	2.8	14.0	45.0	8.9	140.4
2003									
January	37.5	10.1	3.2	0.7	1.1	—	35.4	—	107.8
February	41.8	10.0	6.1	0.9	1.1	8.0	35.4	12.9	116.1
March	45.7	9.6	6.2	0.4	2.0	10.2	31.8	13.7	119.7
April	45.3	11.2	3.9	0.9	0.9	10.4	35.7	7.6	115.9
May	55.2	12.7	9.1	1.1	0.8	11.1	38.2	8.7	136.8
June	52.2	13.4	5.7	1.7	0.9	26.4	37.5	13.3	151.2
July	54.0	14.3	5.1	1.2	1.3	6.7	56.4	9.3	148.3
August	48.5	9.6	5.3	0.9	2.6	6.2	49.8	5.2	128.1
September	56.1	10.4	9.5	0.7	1.9	10.5	40.3	11.1	140.4
October	63.4	8.8	6.4	0.7	1.4	18.2	57.8	15.9	172.6

(a) Excludes leveraged leases.

(b) Includes small passenger vehicles.

(c) Includes coaches and other motor vehicles. Excludes other transport equipment.

(d) Includes other transport equipment.

Source: ABS data available on request, Lease Finance.

Period	Fixed loan facilities					Revolving credit facilities				
	Purchase of motor vehicles(a)	Purchase of individual residential blocks of land	Debt consolidation & refinancing	Other	All personal fixed loans	New and increased credit limits	Cancellations and reductions in credit limits	Total used and unused credit limits available at end of period(b)	Credit used at end of period(b)	Total personal finance
	\$m	\$m	\$m	\$m	\$m	\$m	\$m	\$m	\$m	\$m
2000–01	2 588.1	411.0	1 080.9	1 369.2	5 449.3	8 166.8	3 137.3	28 866.6	12 772.6	13 616.0
2001–02	2 614.1	615.5	1 297.6	1 691.9	6 219.1	9 184.7	4 147.1	32 797.5	14 243.1	15 403.8
2002–03	2 570.2	932.9	1 724.8	1 884.0	7 111.9	10 098.7	3 933.4	40 283.4	17 806.0	17 210.6
2002										
October	219.8	66.1	153.8	158.1	597.8	852.6	295.0	34 133.3	15 043.2	1 450.4
November	205.4	58.3	133.9	146.9	544.5	863.2	274.1	35 322.1	15 554.0	1 407.7
December	220.8	65.7	137.5	164.5	588.5	828.1	254.4	35 948.9	16 035.2	1 416.5
2003										
January	211.0	73.3	129.7	140.0	553.9	744.7	300.7	36 393.4	16 388.6	1 298.7
February	224.4	84.7	148.9	159.0	616.9	716.0	264.0	36 844.7	16 629.8	1 332.9
March	206.5	100.6	143.0	159.7	609.8	812.9	314.7	37 340.1	16 776.6	1 422.7
April	185.0	95.7	149.0	151.5	581.2	749.0	245.9	39 099.8	17 254.8	1 330.2
May	224.2	106.7	146.4	175.1	652.4	897.0	363.2	39 481.0	17 311.9	1 549.4
June	218.3	108.6	161.9	169.7	658.5	972.3	369.2	40 283.4	17 806.0	1 630.8
July	r 225.7	r 125.6	r 172.0	r 167.7	r 691.0	r 991.7	r 320.2	r 40 607.7	r 18 106.7	r 1 682.7
August	212.8	99.9	166.8	168.1	647.6	912.5	329.8	41 080.4	18 326.7	1 560.1
September	224.7	110.4	148.4	168.2	651.7	995.9	351.9	41 726.2	18 575.7	1 647.6
October	225.5	121.2	157.4	188.3	692.5	1 024.7	369.3	42 396.9	18 945.3	1 717.2

(a) Includes motor cycles.

(b) This data item is a STOCK (i.e. balance at end of month) item. Users of the data should exercise care to ensure that this item is not aggregated.

Source: ABS data available on request, Personal Finance.

Period	Original series		Seasonally adjusted		Trend estimates	
	no.	\$m	no.	\$m	no.	\$m
VALUE						
2000–01	126 452	16 667	126 842	16 726	126 806	16 747
2001–02	146 326	22 309	147 019	22 439	145 319	21 984
2002–03	145 439	24 463	145 800	24 506	145 667	24 535
2002						
October	12 639	2 051	11 763	1 959	11 942	1 971
November	12 187	2 022	11 800	1 940	11 910	1 978
December	12 052	2 094	12 004	2 024	11 926	1 988
2003						
January	10 752	1 824	12 274	2 063	11 986	2 005
February	10 894	1 820	11 751	1 960	12 079	2 035
March	12 163	2 068	12 311	2 060	12 188	2 080
April	11 804	2 028	12 271	2 157	12 319	2 141
May	13 105	2 316	12 449	2 192	12 481	2 212
June	12 842	2 304	12 764	2 293	12 671	2 285
July	r 13 699	r 2 504	12 752	2 393	12 865	2 348
August	13 098	2 400	13 053	2 401	13 040	2 398
September	13 259	2 451	13 375	2 450	13 188	2 435
October	14 122	2 569	13 252	2 422	13 318	2 459
PERCENTAGE CHANGE (FROM PREVIOUS MONTH)						
2002						
October	10.6	8.7	–1.7	0.2	–0.5	0.4
November	–3.6	–1.4	0.3	–1.0	–0.3	0.3
December	–1.1	3.5	1.7	4.3	0.1	0.5
2003						
January	–10.8	–12.9	2.2	1.9	0.5	0.8
February	1.3	–0.2	–4.3	–5.0	0.8	1.5
March	11.6	13.7	4.8	5.1	0.9	2.2
April	–3.0	–2.0	–0.3	4.7	1.1	2.9
May	11.0	14.2	1.5	1.6	1.3	3.3
June	–2.0	–0.5	2.5	4.6	1.5	3.3
July	r 6.7	r 8.7	–0.1	4.4	1.5	2.8
August	–4.4	–4.2	2.4	0.3	1.4	2.1
September	1.2	2.1	2.5	2.1	1.1	1.6
October	6.5	4.8	–0.9	–1.2	1.0	1.0

(a) For owner occupation. Excludes alterations and additions. Includes refinancing.

Source: Housing Finance for Owner Occupation, Australia (cat. no. 5609.0).

Period	First home buyers				Other home buyers			
	Number of dwellings financed	Number as proportion of all dwellings financed	Value of commitments	Average borrowing size	Number of dwellings financed	Number as proportion of all dwellings financed	Value of commitments	Average borrowing size
	no.	%	\$m	\$'000	no.	%	\$m	\$'000
2000-01	30 479	24.1	r 3736.1	122.7	95 973	75.9	r 12930.4	134.7
2001-02	34 253	23.4	r 4995.1	146.2	112 108	76.6	17 311.8	154.4
2002-03	23 938	16.5	r 3966.0	r 165.7	121 501	83.5	r 20495.9	168.7
2002								
October	2 093	16.6	342.4	163.6	10 546	83.4	1 708.5	162.0
November	1 979	16.2	324.6	164.0	10 208	83.8	1 697.6	166.3
December	1 921	15.9	323.9	168.6	10 131	84.1	1 769.9	174.7
2003								
January	1 730	16.1	296.3	171.3	9 022	83.9	1 527.4	169.3
February	1 746	16.0	279.5	160.1	9 148	84.0	1 540.5	168.4
March	1 953	16.1	323.0	165.4	10 210	83.9	1 744.9	170.9
April	1 968	16.7	336.9	171.2	9 836	83.3	1 690.8	171.9
May	2 063	15.7	364.1	176.5	11 042	84.3	1 951.1	176.7
June	1 890	14.7	334.7	177.1	10 952	85.3	1 969.2	179.8
July	1 995	14.6	368.9	184.9	r 11 704	85.4	r 2134.8	r 182.4
August	1 885	14.4	357.0	189.4	11 213	85.6	2 041.9	182.1
September	1 923	14.5	365.8	190.2	11 336	85.5	2 085.8	184.0
October	2 038	14.4	375.6	184.3	12 084	85.6	2 193.2	181.5

(a) For owner occupation. Excludes alterations and additions. Includes refinancing.

Source: *Housing Finance for Owner Occupation, Australia (cat. no. 5609.0)*; ABS data available on request, *Housing Finance for Owner Occupation*.

Period	Dwelling units(a)(b)		Value of residential alterations, additions and conversions(a)				Total value of all building(c)	
	no.	Change from previous period	Value of new residential building(a)	Value of residential alterations, additions and conversions(a)	Value of all residential building(a)		Change from previous period	
		%	\$m	\$m	\$m	\$m	%	
ORIGINAL								
2000-01	35 578	-29.0	5 114.8	r 1 191.1	6 305.7	10 368.7	-4.4	
2001-02	49 539	39.2	7 607.6	1 392.2	8 999.7	13 518.7	30.4	
2002-03	r 48 114	2.9	8 372.3	r 1 482.5	r 9 854.8	14 904.8	r 10.3	
2002								
September	3 851	-33.4	672.7	129.7	802.4	1 208.6	-20.7	
October	4 739	23.1	828.8	121.0	949.8	1 283.3	6.2	
November	3 311	-30.1	619.0	114.2	733.2	1 135.6	-11.5	
December	3 527	6.5	587.8	103.2	690.9	1 064.4	-6.3	
2003								
January	3 226	-8.5	570.2	90.9	661.1	r 1 353.7	27.2	
February	3 475	7.7	574.4	135.0	709.4	1 224.0	-9.6	
March	3 399	-2.2	567.0	116.1	683.1	1 118.5	-8.6	
April	4 561	34.2	952.8	135.9	1 088.7	r 1 444.8	r 29.2	
May	r 4 042	-11.4	661.3	136.0	797.4	r 1 277.8	-11.6	
June	4 022	-0.5	683.0	131.6	r 814.6	r 1 195.3	r -6.5	
July	3 912	-2.7	672.1	r 149.9	r 822.0	r 1 104.2	r -7.6	
August	3 671	-6.2	620.1	r 135.2	r 755.3	r 1 296.4	r 17.4	
September	4 385	19.4	724.3	158.5	882.8	1 183.1	-8.7	
October	5 142	17.3	1 017.7	144.7	1 162.4	1 504.3	27.2	
November	3 542	-31.1	631.6	122.2	753.7	1 034.0	-31.3	
SEASONALLY ADJUSTED								
2002								
September	3 904	-21.0	680.9	124.3	805.1	1 273.1	-14.1	
October	4 139	6.0	707.0	102.7	809.6	1 139.6	-10.5	
November	3 688	-10.9	683.7	118.2	801.9	1 164.4	2.2	
December	3 637	-1.4	609.0	119.3	728.3	1 065.5	-8.5	
2003								
January	3 664	0.7	626.3	115.2	741.5	1 600.6	50.2	
February	3 486	-4.9	581.1	135.4	716.5	1 072.1	-33.0	
March	3 258	-6.5	551.7	117.6	669.3	1 012.5	-5.6	
April	4 622	41.9	981.2	139.8	1 121.1	1 412.3	39.5	
May	3 944	-14.7	658.0	125.3	783.3	1 185.5	-16.1	
June	4 247	7.7	715.8	136.0	851.8	1 361.3	14.8	
July	3 950	-7.0	659.0	145.7	804.7	1 229.2	-9.7	
August	3 419	-13.4	591.5	127.2	718.7	1 383.8	12.6	
September	4 306	26.0	712.9	141.2	854.1	1 218.0	-12.0	
October	4 575	6.2	885.2	127.4	1 012.6	1 349.9	10.8	
November	4 000	-12.6	703.2	133.1	836.4	1 070.1	-20.7	

For footnotes see end of table.

...continued



Period	Dwelling units(a)(b)		Total value of all building(c)				
	no.	Change from previous period %	Value of new residential building(a) \$m	Value of residential alterations, additions and conversions(a) \$m	Value of all residential building(a) \$m	Change from previous period \$m	%
TREND ESTIMATES							
2002							
September	4 251	-3.0	728.4	118.3	846.7	1 265.6	-1.5
October	4 049	-4.8	705.7	117.0	822.6	1 217.0	-3.8
November	3 827	-5.5	670.5	116.5	786.9	1 154.0	-5.2
December	3 643	-4.8	633.2	117.9	751.0	1 092.7	-5.3
2003							
January	3 547	-2.6	608.0	120.3	728.3	1 057.6	-3.2
February	3 569	0.6	603.1	124.2	727.3	1 063.4	0.5
March	3 661	2.6	613.7	127.8	741.5	1 099.4	3.4
April	3 766	2.9	628.7	131.0	757.0	1 144.0	4.1
May	3 870	2.8	645.9	133.5	775.4	1 187.9	3.8
June	3 940	1.8	660.2	135.1	794.6	1 216.6	2.4
July	3 976	0.9	670.3	135.6	813.2	1 221.0	0.4
August	3 985	0.2	678.3	135.5	832.2	1 206.1	-1.2
September	3 996	0.3	687.4	134.7	852.7	1 182.2	-2.0
October	4 011	0.4	697.6	133.5	872.5	1 156.5	-2.2
November	4 040	0.7	709.3	133.1	892.4	1 131.5	-2.2

(a) Valued at \$10,000 and over.

(b) Includes all new dwelling units created.

(c) Includes residential building valued at \$10,000 and over and non-residential building valued at \$50,000 and over.

Source: *Building Approvals, Australia* (cat. no. 8731.0); ABS data available on request, *Building Approvals* collection.

Period	Number of new dwelling units(a)(b)				Value of building approvals				
	All new dwelling units				All building				
	Private sector	Public sector	Proportion of state total	New dwelling units(a)	Residential alterations, additions and conversions(a)(c)	Non-residential building(d)	Proportion of state total		
	no.	no.	no.	%	\$m	\$m	\$m	\$m	%
MELBOURNE									
2000-01	26 265	374	26 639	77.8	4 118.0	990.6	3 470.7	8 579.3	82.7
2001-02	35 606	635	36 241	75.0	5 918.8	1 153.8	3 843.4	10 916.1	80.7
2002-03	r 34 871	572	r 35 443	r 75.3	r 6 538.8	1 215.1	r 4 259.7	r 12 013.6	80.6
2002									
September	r 2 715	56	r 2 771	r 73.4	510.5	105.8	r 345.7	r 962.0	79.6
October	r 3 492	70	r 3 562	75.8	666.6	97.6	273.9	1 038.1	80.9
November	r 2 365	17	r 2 382	73.4	487.3	91.7	315.1	894.1	78.7
December	r 2 569	13	r 2 582	r 75.0	452.4	81.2	297.5	831.0	78.1
2003									
January	r 2 436	2	r 2 438	76.2	450.4	72.6	r 656.8	1 179.8	87.2
February	r 2 311	105	r 2 416	71.2	412.4	112.7	446.3	971.3	79.4
March	r 2 422	34	r 2 456	73.7	427.8	93.5	362.2	883.4	79.0
April	r 3 378	35	r 3 413	r 77.3	791.4	112.5	r 274.7	r 1 178.6	r 81.6
May	r 2 578	142	r 2 720	r 70.5	473.2	111.7	r 419.5	r 1 004.4	r 78.6
June	r 2 873	14	r 2 887	73.5	r 515.0	105.8	r 332.8	r 953.5	r 79.8
July	2 629	1	2 630	67.7	470.8	r 120.0	r 194.1	r 784.9	r 71.1
August	2 588	38	2 626	72.7	463.1	r 112.4	r 465.1	r 1 040.6	r 80.3
September	3 014	18	3 032	72.4	536.9	132.2	254.3	923.4	78.1
October	3 938	16	3 954	77.4	827.1	114.3	271.9	1 213.4	80.7
November	2 349	91	2 440	70.2	457.2	97.7	231.9	786.8	76.1
BALANCE OF VICTORIA									
2000-01	7 551	71	7 622	22.2	996.8	200.4	592.1	1 789.4	17.3
2001-02	11 823	261	12 084	25.0	1 688.7	238.3	675.6	2 602.6	19.3
2002-03	r 11 486	153	r 11 639	r 24.7	r 1 833.5	267.3	790.2	2 891.1	19.4
2002									
September	r 988	16	r 1 004	r 26.6	162.2	23.9	60.4	246.6	20.4
October	r 1 127	9	r 1 136	24.2	162.2	23.4	59.6	245.2	19.1
November	856	6	862	26.6	131.7	22.5	87.3	241.5	21.3
December	r 842	18	r 860	r 25.0	135.4	22.0	75.9	233.3	21.9
2003									
January	742	21	763	23.8	119.7	18.3	35.8	173.8	12.8
February	r 974	5	r 979	28.8	162.0	22.3	68.3	252.7	20.6
March	r 866	11	r 877	26.3	139.2	22.6	73.2	235.1	21.0
April	r 974	27	r 1 001	r 22.7	161.4	23.4	81.4	266.2	r 18.4
May	1 128	12	1 140	r 29.5	188.1	24.3	60.8	273.3	r 21.4
June	r 1 030	10	r 1 040	26.5	r 168.0	25.8	48.0	r 241.8	r 20.2
July	1 231	22	1 253	32.3	201.2	29.9	r 88.2	r 319.4	r 28.9
August	980	4	984	27.3	157.0	22.8	r 76.0	r 255.8	r 19.7
September	1 149	5	1 154	27.6	187.4	26.3	45.9	259.6	21.9
October	1 150	3	1 153	22.6	190.6	30.4	70.0	291.0	19.3
November	1 023	12	1 035	29.8	174.3	24.5	48.4	247.2	23.9

For footnotes see end of table.

...continued

Period	Number of new dwelling units(a)(b)				Value of building approvals				
	<i>All new dwelling units</i>				<i>All building</i>				
	Private sector	Public sector	Proportion of state total	New dwelling units(a)	Residential alterations, additions and conversions(a)(c)	Non-residential building(d)	Proportion of state total		
	no.	no.	no.	%	\$m	\$m	\$m	\$m	%
VICTORIA									
2000–01	33 816	445	34 261	100.0	5 114.8	1 191.0	4 062.8	10 368.7	100.0
2001–02	47 429	896	48 325	100.0	7 607.6	1 392.1	4 519.0	13 518.7	100.0
2002–03	r 46 357	725	r 47 082	100.0	r 8 372.3	r 1 482.5	r 5 049.9	r 14 904.7	—
2002									
September	r 3 703	72	r 3 775	100.0	672.7	129.7	r 406.2	r 1 208.6	100.0
October	r 4 619	79	r 4 698	100.0	828.8	121.0	333.5	1 283.3	100.0
November	r 3 221	23	r 3 244	100.0	619.0	114.2	402.4	1 135.6	100.0
December	r 3 411	31	r 3 442	100.0	587.8	103.2	373.4	1 064.4	100.0
2003									
January	r 3 178	23	r 3 201	100.0	570.2	90.9	r 692.6	r 1 353.7	100.0
February	r 3 285	110	r 3 395	100.0	574.4	135.0	514.6	1 224.0	100.0
March	r 3 288	45	r 3 333	100.0	567.0	116.1	435.4	1 118.5	100.0
April	r 4 352	62	r 4 414	100.0	952.8	135.9	r 356.1	r 1 444.8	100.0
May	r 3 706	154	r 3 860	100.0	661.3	136.0	r 480.4	r 1 277.8	100.0
June	r 3 903	24	r 3 927	100.0	r 683.0	131.6	r 380.7	r 1 195.3	100.0
July	3 860	23	3 883	100.0	672.1	r 149.9	r 282.3	r 1 104.2	100.0
August	3 568	42	3 610	100.0	620.1	r 135.2	r 541.1	r 1 296.4	100.0
September	4 163	23	4 186	100.0	724.3	158.5	300.3	1 183.1	100.0
October	5 088	19	5 107	100.0	1 017.7	144.7	342.0	1 504.3	100.0
November	3 372	103	3 475	100.0	631.6	122.2	280.2	1 034.0	100.0

(a) Valued at \$10,000 and over.

(b) Excludes dwelling units created as a result of conversions or construction of non-residential buildings.

(c) Includes alterations and additions creating dwellings, alterations and additions not creating dwellings, and conversions.

(d) Valued at \$50,000 and over.

Source: *Building Approvals, Victoria (cat. no. 8731.2)*; ABS data available on request, *Building Approvals collection*.

Local Government Area	September quarter 2003			12 months ending September quarter 2003			
	Number of dwelling units(b)	Number of building jobs	Value of all approvals	Number of dwelling units(b)	Number of building jobs	Value of all approvals	Number of dwelling units per '000 population(c)
Local Government Area	no.	no.	\$m	no.	no	\$m	
Alpine (S)	26	52	5.2	121	211	32.1	9.2
Ararat (RC)	11	19	2.3	42	80	15.7	3.6
Ballarat (C)	199	303	51.3	785	1 186	195.5	9.3
Banyule (C)	149	294	47.2	470	934	161.0	4.0
Bass Coast (S)	178	294	36.3	657	944	115.1	24.5
Baw Baw (S)	103	161	27.6	360	565	91.9	9.8
Bayside (C)	209	330	80.6	569	1 033	256.8	6.4
Benalla (RC)(a)	29	45	13.4	29	45	13.4	n.a.
Booroondara (C)	151	415	86.4	649	1 544	397.9	4.1
Brimbank (C)	331	407	86.9	1 222	1 481	339.0	7.1
Buloke (S)	2	8	0.5	10	33	2.5	1.4
Campaspe (S)	69	124	16.6	271	434	64.6	7.4
Cardinia (S)	355	421	73.3	1 280	1 528	238.6	26.3
Casey (C)	875	1 065	182.7	3 465	4 190	727.7	18.1
Central Goldfields (S)	25	43	7.4	60	111	18.9	4.6
Colac-Otway (S)	53	93	12.7	193	324	44.8	9.1
Corangamite (S)	21	34	4.2	63	147	17.2	3.6
Darebin (C)	172	281	44.5	681	1 004	189.4	5.3
East Gippsland (S)	142	195	34.1	566	688	125.5	14.2
Frankston (C)	398	380	71.0	1 329	1 515	261.1	11.5
Gannawarra (S)	16	38	4.5	40	87	10.0	3.3
Glen Eira (C)	151	305	58.6	760	1 087	261.4	6.2
Glenelg (S)	28	72	7.0	107	276	28.5	5.3
Golden Plains (S)	62	88	11.1	225	345	42.8	14.6
Greater Bendigo (C)	286	385	61.1	958	1 372	229.8	10.4
Greater Dandenong (C)	130	219	66.2	413	716	253.9	3.2
Greater Geelong (C)	568	766	135.6	1 950	2 795	509.0	9.8
Greater Shepparton (C)	100	140	25.3	398	634	98.5	6.7
Hepburn (S)	63	71	11.2	159	244	32.1	10.9
Hindmarsh (S)	1	7	0.8	8	33	5.1	1.2
Hobsons Bay (C)	136	190	39.1	467	731	144.9	5.6
Horsham (RC)	49	77	10.6	145	263	31.5	7.8
Hume (C)	617	794	150.8	1 885	2 388	508.8	13.4
Indigo (S)	19	57	17.5	97	203	36.1	6.5
Kingston (C)	264	397	90.6	854	1 417	292.7	6.3
Knox (C)	190	333	73.0	610	1 195	198.4	4.1
Latrobe (C)	106	189	34.0	349	696	110.7	4.9
Loddon (S)	5	19	1.3	23	65	7.3	2.7
Macedon Ranges (S)	168	210	36.7	476	681	113.0	12.4
Manningham (C)	176	216	43.5	630	758	179.0	5.5
Mansfield (S)(a)	39	52	6.5	39	52	6.5	n.a.
Maribymong (C)	189	185	53.4	578	631	168.0	9.4
Maroondah (C)	97	259	36.8	491	921	157.2	4.9
Melbourne (C)	756	310	520.8	3 983	1 097	2 939.2	73.8
Melton (S)	536	566	97.1	1 960	2 020	361.9	33.4
Mildura (RC)	95	150	27.7	450	567	108.9	8.9
Mitchell (S)	111	135	20.9	440	546	81.9	15.0
Moir (S)	73	108	17.5	226	352	52.7	8.4
Monash (C)	264	388	88.9	916	1 289	321.3	5.6
Moonee Valley (C)	145	270	50.6	577	945	190.2	5.2
Moorabool (S)	59	93	15.7	218	359	51.7	8.6
Moreland (C)	289	267	59.2	986	1 036	208.7	7.2
Mornington Peninsula (S)	396	712	119.5	1 646	2 710	477.5	12.1
Mount Alexander (S)	27	59	6.0	111	217	25.2	6.5
Moyne (S)	28	60	9.0	95	210	27.4	6.0
Murrindindi (S)	22	42	5.5	123	206	24.7	8.9

For footnotes see end of table.

...continued

<i>Local Government Area</i>	<i>September quarter 2003</i>			<i>12 months ending September quarter 2003</i>			
	<i>Number of dwelling units(b)</i>	<i>Number of building jobs</i>	<i>Value of all approvals</i>	<i>Number of dwelling units(b)</i>	<i>Number of building jobs</i>	<i>Value of all approvals</i>	<i>Number of dwelling units per '000 population(c)</i>
<i>Local Government Area</i>	<i>no.</i>	<i>no.</i>	<i>\$m</i>	<i>no.</i>	<i>no.</i>	<i>\$m</i>	
Nillumbik (S)	63	136	23.4	255	537	90.0	4.2
Northern Grampians (S)	11	32	6.6	44	126	15.5	3.4
Port Phillip (C)	139	169	58.9	1 267	694	530.7	15.5
Pyrenees (S)	14	20	1.8	36	81	8.0	5.4
Queenscliffe (B)	15	25	3.9	44	60	28.4	13.5
South Gippsland (S)	90	139	16.2	294	460	53.0	11.1
Southern Grampians (S)	9	40	3.3	57	188	21.2	3.3
Stonnington (C)	85	250	113.2	456	951	388.1	5.0
Strathbogie (S)	17	36	4.4	69	129	16.1	7.2
Surf Coast (S)	75	136	22.7	356	539	112.4	16.5
Swan Hill (RC)	48	77	14.5	117	219	30.6	5.5
Towong (S)	10	19	1.7	29	59	5.4	4.6
Wangaratta (RC)	30	66	9.8	152	266	38.1	5.7
Warrnambool (C)	71	115	22.5	312	431	94.5	10.4
Wellington (S)	111	170	18.3	292	539	68.5	7.1
West Wimmera (S)	3	11	1.3	10	28	3.7	2.1
Whitehorse (C)	90	312	50.3	526	1 233	263.1	3.6
Whittlesea (C)	219	271	51.4	1 258	1 313	257.1	10.4
Wodonga (RC)	121	168	27.6	417	569	91.7	12.6
Wyndham (C)	740	811	140.4	2 757	3 029	527.6	29.8
Yarra (C)	108	170	51.4	549	748	208.0	7.9
Yarra Ranges (S)	138	364	39.3	622	1 365	184.7	4.3
Yarriambiack (S)	2	7	0.4	9	32	8.8	1.1
Unincorporated Vic.	0	1	2.2	0	1	2.2	—
<b>Victoria</b>	<b>11 968</b>	<b>16 738</b>	<b>3 583.7</b>	<b>46 270</b>	<b>60 950</b>	<b>14 681.0</b>	<b>9.5</b>

(a) Formerly included in Delatite (S).

(b) Valued at \$10,000 and over. Excludes dwelling units created as a result of conversions or construction of non-residential buildings, but includes alterations and additions to all buildings.

(c) Preliminary Estimated Resident Population as at 30 June 2002.

Source: ABS data available on request, *Building Approvals*.

Period	New residential building				Non-residential building		
	Houses	Other residential building	Total	Alterations and additions to residential buildings	Private sector	Total	Total building
	\$m	\$m	\$m	\$m	\$m	\$m	\$m
WORK COMMENCED — ORIGINAL							
2000–2001	3 747.4	1 762.3	5 511.6	1 180.1	3 122.9	3 860.0	10 556.7
2001–02	5 517.6	2 126.3	7 644.0	1 500.2	3 207.3	4 231.8	13 375.9
2002–03	5 521.5	2 544.2	8 065.9	1 414.9	3 819.9	4 630.1	14 110.9
2002							
March	1 312.6	528.4	1 841.1	375.1	830.3	1 289.3	3 506.0
June	1 471.7	520.6	1 992.1	366.3	920.5	1 154.7	3 512.0
September	1 583.2	792.1	2 375.4	340.2	665.6	954.8	3 670.4
December	1 456.5	562.4	2 018.9	377.0	935.0	1 097.7	3 493.6
2003							
March	1 298.3	565.5	1 863.9	333.3	1 114.8	1 267.6	3 464.8
June	1 183.5	624.2	1 807.7	364.4	1 104.5	1 310.0	3 482.1
WORK DONE — ORIGINAL							
2000–2001	4 055.6	1 559.5	5 615.4	1 239.8	2 766.9	3 651.2	10 507.5
2001–02	4 924.7	1 802.8	6 727.5	1 453.2	3 020.8	3 949.4	12 130.2
2002–03	5 631.3	2 059.7	7 691.0	1 425.5	3 621.4	4 663.2	13 779.8
2002							
March	1 151.5	444.6	1 596.3	327.1	674.5	870.0	2 793.3
June	1 426.1	483.8	1 909.8	396.5	848.9	1 087.2	3 393.4
September	1 524.8	498.5	2 023.3	369.5	955.1	1 313.6	3 706.4
December	1 476.9	492.6	1 969.5	360.0	897.3	1 160.1	3 489.7
2003							
March	1 345.7	510.3	1 856.0	331.8	837.6	1 046.3	3 234.1
June	1 283.9	558.3	1 842.2	364.2	931.4	1 143.2	3 349.6
WORK DONE — SEASONALLY ADJUSTED(b)							
2002							
March	1 224.5	476.7	1 701.3	356.5	758.6	974.0	3 031.7
June	1 397.4	467.5	1 864.7	378.7	835.7	1 075.9	3 319.3
September	1 456.4	466.9	1 923.3	374.2	915.0	1 259.6	3 557.0
December	1 486.0	509.1	1 995.1	344.3	851.9	1 103.3	3 442.7
2003							
March	1 429.4	545.1	1 974.5	360.0	937.3	1 167.5	3 502.0
June	1 259.4	538.6	1 798.1	347.2	917.1	1 132.9	3 278.1

(a) Reference year for chain volume measures is 2001–02. See paragraphs 31 to 33 of the Explanatory Notes in *Building Activity, Victoria* (cat. no. 8752.2).

(b) The seasonally adjusted series has been revised as a result of a change in the methodology used to seasonally adjust the series. See paragraphs 29 to 30 of the Explanatory Notes in *Building Activity, Victoria* (cat. no. 8752.2) Jun. qtr. 2003.

Source: *Building Activity, Victoria* (cat. no. 8752.2).

	Value of building commenced	Value of building under construction at end of quarter	Value of building completed	Value of work yet to be done at end of quarter	Value of work done
	\$m	\$m	\$m	\$m	\$m
MELBOURNE					
Houses	1 109.5	2 879.3	1 283.5	1 350.7	1 213.1
Other residential building	692.0	4 169.7	352.2	2 337.8	609.6
<i>Total residential building</i>	<i>1 801.5</i>	<i>7 049.0</i>	<i>1 635.7</i>	<i>3 688.5</i>	<i>1 822.7</i>
Hotels etc.	10.6	196.9	4.9	38.9	32.8
Shops	136.0	636.9	203.5	253.4	157.4
Factories, offices and other business premises	697.4	2 211.1	339.8	1 078.5	484.4
Educational	149.0	708.7	71.0	258.0	130.0
Health	90.2	580.9	114.0	404.7	74.0
Entertainment and recreational	23.6	621.3	31.0	396.8	66.0
Other non-residential building	57.6	147.5	46.0	85.5	46.4
<i>Total non-residential building</i>	<i>1 164.4</i>	<i>5 103.2</i>	<i>810.2</i>	<i>2 515.7</i>	<i>991.0</i>
<b>Total Melbourne</b>	<b>2 965.9</b>	<b>12 152.2</b>	<b>2 445.9</b>	<b>6 204.2</b>	<b>2 813.7</b>
BALANCE OF VICTORIA					
Houses	473.3	1 089.0	498.1	506.5	480.4
Other residential building	35.5	95.7	25.4	46.4	31.7
<i>Total residential building</i>	<i>508.8</i>	<i>1 184.7</i>	<i>523.5</i>	<i>552.9</i>	<i>512.1</i>
Hotels etc.	8.7	13.9	14.3	5.7	13.9
Shops	40.6	61.4	16.5	30.4	22.1
Factories, offices and other business premises	46.9	112.0	48.4	31.7	53.4
Educational	40.3	158.2	39.4	85.8	37.4
Health	34.6	140.2	56.5	71.4	29.8
Entertainment and recreational	16.1	38.8	7.2	18.7	12.7
Other non-residential building	40.1	91.4	26.9	48.8	27.0
<i>Total non-residential building</i>	<i>227.4</i>	<i>616.0</i>	<i>209.2</i>	<i>292.5</i>	<i>196.3</i>
<b>Total Balance of Victoria</b>	<b>736.1</b>	<b>1 800.8</b>	<b>732.8</b>	<b>845.4</b>	<b>708.4</b>
VICTORIA					
Houses	1 582.8	3 968.4	1 781.6	1 857.2	1 693.5
Other residential building	727.5	4 265.4	377.6	2 384.2	641.3
<i>Total residential building</i>	<i>2 310.3</i>	<i>8 233.8</i>	<i>2 159.2</i>	<i>4 241.4</i>	<i>2 334.8</i>
Hotels etc.	19.3	210.8	19.2	44.6	46.7
Shops	176.7	698.2	219.9	283.8	179.5
Factories, offices and other business premises	744.3	2 323.1	388.2	1 110.2	537.8
Educational	189.3	866.9	110.5	343.7	167.4
Health	124.8	721.1	170.4	476.1	103.9
Entertainment and recreational	39.7	660.2	38.2	415.5	78.7
Other non-residential building	97.7	239.0	72.9	134.3	73.4
<i>Total non-residential building</i>	<i>1 391.8</i>	<i>5 719.3</i>	<i>1 019.5</i>	<i>2 808.2</i>	<i>1 187.4</i>
<b>Total Victoria</b>	<b>3 702.0</b>	<b>13 953.0</b>	<b>3 178.7</b>	<b>7 049.6</b>	<b>3 522.2</b>

Source: Building Activity, Victoria, (cat. no. 8752.2); ABS data available on request, Building Activity.

Period	Original series			Seasonally adjusted			Trend estimates			Change from previous period
	Passen-ger vehicles	Other vehicles	Total vehicles	Passen-ger vehicles	Other vehicles	Total vehicles	Passen-ger vehicles	Other vehicles	Total vehicles	
	no.	no.	no.	no.	no.	no.	no.	no.	no.	%
2000–01	166 500	57 924	224 424	167 365	58 304	225 669	156 443	56 734	213 177	8.5
2001–02	154 868	66 331	221 199	155 852	66 574	222 426	153 435	66 371	219 806	3.1
2002–03	160 635	74 116	234 751	160 932	74 216	235 148	161 447	74 386	235 833	7.3
2002										
September	13 286	5 479	18 765	13 507	5 944	19 451	13 058	5 979	19 037	0.8
October	14 351	5 834	20 185	13 108	5 843	18 951	13 217	5 956	19 173	0.7
November	13 857	5 972	19 829	13 462	5 919	19 381	13 322	5 973	19 295	0.6
December	13 837	5 869	19 706	12 607	5 628	18 235	13 389	6 030	19 419	0.6
2003										
January	11 318	5 172	16 490	13 576	6 327	19 903	13 454	6 123	19 577	0.8
February	12 302	5 850	18 152	13 289	6 230	19 519	13 558	6 251	19 809	1.2
March	14 020	6 388	20 408	13 726	6 371	20 097	13 711	6 381	20 092	1.4
April	12 440	5 928	18 368	13 839	6 312	20 151	13 891	6 482	20 373	1.4
May	13 975	7 078	21 053	14 234	6 654	20 888	14 068	6 556	20 624	1.2
June	15 898	8 234	24 132	14 344	6 796	21 140	14 208	6 603	20 811	0.9
July	14 379	6 869	21 248	14 103	6 731	20 834	14 282	6 631	20 913	0.5
August	13 670	6 129	19 799	14 319	6 215	20 534	14 297	6 645	20 942	0.1
September	14 719	6 481	21 200	14 434	6 802	21 236	14 279	6 654	20 933	—
October	14 850	6 487	21 337	13 623	6 481	20 104	14 243	6 663	20 906	–0.1
November	13 861	6 393	20 254	13 897	6 576	20 473	14 180	6 657	20 837	–0.3

(a) Excludes motorcycles, plant and equipment, and unpowered vehicles.

Source: Sales of New Motor Vehicles, (cat. no. 9314.0.55.001).



									Total
	Food retailing	Department stores	Clothing and soft good retailing	Household good retailing	Recreational good retailing	Other retailing	Hospitality and services		Change from previous month
Month	\$m	\$m	\$m	\$m	\$m	\$m	\$m	\$m	%
ORIGINAL									
2002									
September	1 365.1	247.3	236.2	478.3	138.1	318.1	436.0	3 219.2	-3.3
October	1 460.6	285.3	252.2	514.0	141.3	334.5	419.2	3 407.1	5.8
November	1 483.9	364.2	265.6	536.2	147.2	350.6	434.4	3 582.2	5.1
December	1 625.2	580.8	341.3	674.6	230.2	483.2	500.0	4 435.2	23.8
2003									
January	1 506.9	264.7	209.2	502.8	139.0	310.9	473.7	3 407.3	-23.2
February	1 355.4	219.5	190.8	446.1	120.9	306.1	414.2	3 053.1	-10.4
March	1 465.0	272.5	240.0	486.3	124.5	333.6	469.0	3 390.8	11.1
April	1 440.5	297.0	257.7	473.0	128.0	306.9	443.1	3 346.2	-1.3
May	1 481.6	304.8	263.5	512.7	130.6	337.0	456.0	3 486.0	4.2
June	1 375.4	313.5	246.8	527.2	120.5	311.0	431.2	3 325.7	-4.6
July	1 479.7	282.1	231.4	530.8	122.8	377.2	494.1	3 518.1	5.8
August	1 471.6	264.1	224.4	504.2	125.4	381.6	493.9	3 465.1	-1.5
September	1 445.6	278.0	230.1	517.2	123.3	385.1	471.5	3 450.9	-0.4
October	1 530.4	317.4	260.2	540.0	135.0	452.4	536.6	3 772.0	9.3
November	1 516.6	370.5	269.9	541.8	145.0	458.3	537.3	3 839.4	1.8
SEASONALLY ADJUSTED									
2002									
September	1 427.9	291.5	256.4	502.1	147.5	330.5	455.9	3 411.7	0.2
October	1 439.1	292.6	250.8	505.3	146.9	319.6	420.1	3 374.3	-1.1
November	1 444.1	318.4	249.9	505.0	137.8	332.5	431.2	3 419.0	1.3
December	1 431.2	298.7	240.7	515.2	148.7	324.1	446.2	3 404.9	-0.4
2003									
January	1 446.0	306.8	224.3	503.6	132.8	345.1	467.0	3 425.6	0.6
February	1 461.6	308.8	243.3	501.2	140.1	351.7	449.6	3 456.2	0.9
March	1 457.7	314.2	246.8	524.0	136.4	351.2	457.4	3 487.8	0.9
April	1 490.2	308.7	252.5	511.7	145.7	338.3	453.7	3 500.7	0.4
May	1 491.6	310.7	250.8	527.6	137.0	347.4	463.9	3 529.2	0.8
June	1 475.0	342.4	250.5	531.4	133.5	345.0	456.9	3 534.7	0.2
July	1 503.1	297.2	247.7	541.4	130.1	386.9	486.9	3 593.2	1.7
August	1 489.7	322.3	251.1	527.8	131.3	395.6	483.5	3 601.2	0.2
September	1 500.9	315.9	248.4	534.0	129.4	401.8	497.2	3 627.7	0.7
October	1 481.2	326.9	254.6	525.5	137.8	432.0	517.6	3 675.6	1.3
November	1 507.3	327.3	259.2	518.2	141.5	434.8	550.5	3 738.8	1.7
TREND ESTIMATES									
2002									
September	1 431.2	295.7	251.8	509.5	149.2	324.1	453.4	3 398.9	—
October	1 435.5	298.4	249.4	506.1	146.8	326.3	437.7	3 400.0	—
November	1 438.4	301.9	245.6	504.9	143.8	330.3	439.7	3 404.9	0.1
December	1 442.6	304.8	241.9	505.5	141.2	335.2	443.8	3 415.9	0.3
2003									
January	1 449.1	307.4	240.1	507.4	139.8	339.2	449.1	3 432.6	0.5
February	1 457.9	309.7	241.0	510.3	139.4	341.9	453.5	3 453.4	0.6
March	1 467.6	311.9	243.9	514.6	139.1	344.0	456.4	3 477.1	0.7
April	1 477.2	313.9	247.3	519.9	138.2	346.5	458.4	3 501.4	0.7
May	1 485.0	315.6	249.6	525.8	136.4	351.6	461.0	3 525.0	0.7
June	1 489.6	316.9	250.5	530.4	134.4	361.4	467.0	3 550.2	0.7
July	1 491.8	317.8	250.4	532.4	133.0	375.5	477.2	3 578.0	0.8
August	1 493.3	319.0	250.7	531.9	132.5	392.0	490.0	3 609.4	0.9
September	1 494.7	320.5	251.9	530.1	133.3	408.0	503.9	3 642.4	0.9
October	1 495.9	322.5	253.4	527.8	134.6	422.3	517.9	3 674.4	0.9
November	1 497.7	324.0	255.1	524.4	136.8	433.7	530.5	3 702.3	0.8

(a) Excludes motor vehicles. parts. petrol. etc

Source: Retail Trade, Australia (cat. no. 8501.0).

Quarter Ended	Original		Seasonally adjusted		Trend estimates	
	Victoria	Australia	Victoria	Australia	Victoria	Australia
TURNOVER (\$m)						
2002						
June	9 676.9	40 436.7	10 061.2	42 028.7	9 993.6	41 891.5
September	9 743.2	41 258.2	10 077.6	42 435.6	10 059.8	42 384.5
December	11 252.1	47 652.6	10 028.4	42 706.9	10 078.1	42 627.0
2003						
March	9 642.1	40 588.3	10 147.8	42 757.6	10 165.2	42 998.4
June	9 930.0	41 936.8	10 313.4	43 535.8	10 326.2	43 640.4
September	10 182.4	43 503.2	10 554.6	44 718.7	10 500.6	44 413.9
PERCENTAGE CHANGE (FROM PREVIOUS QUARTER)						
2002						
June	3.7	3.3	2.5	2.2	1.5	1.6
September	0.7	2.0	0.2	1.0	0.7	1.2
December	15.5	15.5	-0.5	0.6	0.2	0.6
2003						
March	-14.3	-14.8	1.2	0.1	0.9	0.9
June	3.0	3.3	1.6	1.8	1.6	1.5
September	2.5	3.7	2.3	2.7	1.7	1.8
PERCENTAGE CHANGE (FROM SAME QUARTER OF PREVIOUS YEAR)						
2002						
June	7.2	6.1	7.3	6.2	6.7	5.7
September	6.0	5.6	5.8	5.5	5.8	5.7
December	3.9	5.4	4.2	5.4	4.3	5.0
2003						
March	3.4	3.7	3.4	4.0	3.3	4.3
June	2.6	3.7	2.5	3.6	3.3	4.2
September	4.5	5.4	4.7	5.4	4.4	4.8

(a) Excludes motor vehicles, parts, petrol, etc.

(b) Reference year for chain volume measures is 2001-02.

Source: Retail Trade, Australia (cat. no. 8501.0).

<i>Hotels, motels, guest houses and serviced apartments(a)</i>								
	<i>Establish- ments</i>	<i>Guest rooms</i>	<i>Bed spaces</i>	<i>Persons employed</i>	<i>Room nights occupied</i>	<i>Room occupancy rate</i>	<i>Guest nights occupied</i>	<i>Takings from accommodation</i>
<i>Quarter ended</i>	<i>no.</i>	<i>no.</i>	<i>no.</i>	<i>no.</i>	<i>'000</i>	<i>%</i>	<i>'000</i>	<i>\$m</i>
2001								
September	707	32 274	87 398	22 011	1 649.2	55.5	2 797.1	214.1
December	711	32 548	88 604	21 333	1 757.3	58.7	2 990.0	221.0
2002								
March	711	32 605	88 872	21 099	1 777.1	60.6	3 079.7	230.1
June	712	32 894	89 537	21 208	1 607.4	53.7	2 647.3	193.0
September	715	33 184	90 233	21 465	1 672.6	54.9	2 832.7	211.0
December	714	33 183	90 199	21 208	1 827.8	59.9	3 090.8	232.8
2003								
March	721	33 401	90 140	21 136	1 825.0	60.7	3 117.1	237.6
June	750	34 902	93 644	21 224	1 695.2	53.4	2 830.8	206.1

(a) Comprising establishments with 15 or more rooms or units.

Source: Tourist Accommodation, Australia (cat. no. 8635.0).

<i>Hotels, motels and serviced apartments(a)</i>					
	<i>Room occupancy rate</i>	<i>Guest nights</i>	<i>Guest arrivals</i>	<i>Average length of stay</i>	<i>Takings from accommodation</i>
<i>Tourism region</i>	<i>%</i>	<i>'000</i>	<i>'000</i>	<i>days</i>	<i>\$'000</i>
Melbourne	59.9	1 864.4	800.7	2.3	154 709
Melbourne East	39.7	26.7	16.1	1.7	2 255
Peninsula	38.2	43.5	21.7	2.0	3 120
Geelong	46.8	58.3	32.9	1.8	3 682
Western	49.8	116.5	70.6	1.7	5 995
Western Grampians	50.5	36.2	27.7	1.3	1 902
Central Highlands	48.8	31.3	18.3	1.7	1 220
Ballarat	52.1	84.1	46.9	1.8	3 801
Macedon	36.4	3.9	2.5	1.6	370
Spa Country	52.6	12.4	6.4	1.9	1 307
Bendigo Loddon	52.5	69.3	44.0	1.6	3 717
Wimmera	30.3	5.4	4.5	1.2	203
Mallee	55.1	101.6	62.7	1.6	4 807
Central Murray	46.9	41.9	25.9	1.6	1 959
Goulburn	45.4	52.6	33.9	1.6	3 062
Upper Yarra	30.5	17.4	10.1	1.7	1 499
High Country	28.8	105.7	57.6	1.8	5 031
Murray East	43.5	32.0	19.1	1.7	1 388
Lakes	42.1	43.6	28.9	1.5	1 937
Gippsland	40.4	55.8	34.1	1.6	2 857
Phillip Island	33.4	28.4	14.6	1.9	1 315
<b>Total Victoria</b>	<b>53.4</b>	<b>2 831.0</b>	<b>1 379.0</b>	<b>2.1</b>	<b>206 134</b>

(a) Comprising establishments with 15 or more rooms or units.

Source: Tourist Accommodation, Small Area Data, Victoria (cat. no. 8635.2.55.001).

Period	Livestock slaughterings					Meat (carcass weight)				
	Cattle	Calves	Sheep	Lambs	Pigs	Beef	Veal	Mutton	Lamb	Pigmeat
	'000	'000	'000	'000	'000	tonnes	tonnes	tonnes	tonnes	tonnes
ORIGINAL										
2000–01	1 523.9	608.9	4 193.3	8 090.0	1 065.6	354 819	11 842	84 016	157 898	78 954
2001–02	1 431.1	597.0	3 819.5	6 997.4	1 042.1	342 898	11 996	74 426	136 324	73 653
2002–03	1 650.4	749.3	3 641.2	6 904.8	1 033.2	370 223	16 007	67 552	130 699	72 105
2002										
September	136.5	151.9	320.3	561.2	80.6	30 621	4 074	5 998	10 516	5 706
October	162.9	84.1	403.2	666.0	92.6	36 355	1 662	7 651	12 176	6 450
November	152.2	31.1	383.0	652.7	81.3	34 316	672	7 278	11 709	5 560
December	120.6	11.9	325.8	572.5	87.3	27 394	256	6 269	11 272	5 951
2003										
January	139.6	11.0	384.6	574.1	83.5	31 936	277	7 114	10 759	5 642
February	136.5	10.8	346.0	554.6	78.1	30 647	244	6 541	10 544	5 401
March	143.7	22.7	279.2	557.1	82.8	32 099	481	5 021	10 702	5 776
April	136.1	41.7	237.9	548.4	86.2	29 821	859	4 216	10 618	6 011
May	145.9	56.0	225.0	573.1	94.3	32 044	1 156	3 940	11 004	6 681
June	128.7	66.6	179.8	518.1	89.0	28 001	1 323	3 244	10 071	6 331
July	127.8	85.7	165.7	515.8	92.5	28 240	1 633	3 080	9 896	6 642
August	110.0	142.5	163.7	441.9	77.5	24 769	2 693	3 188	8 589	5 637
September	120.1	134.7	212.2	520.6	78.1	27 315	2 753	4 206	10 378	5 569
October	134.1	62.2	276.0	610.7	82.4	31 282	1 349	5 737	12 304	5 896
November	126.9	28.7	264.5	608.2	74.1	28 837	935	5 524	12 482	5 399
SEASONALLY ADJUSTED										
2002										
September	153.1	67.5	354.7	595.0	85.8	33 447	1 869	6 482	10 937	5 983
October	143.4	70.3	347.6	576.7	88.3	32 119	1 404	6 329	10 753	6 104
November	143.7	83.2	337.5	593.3	86.5	31 969	1 588	6 182	11 021	5 968
December	127.8	74.1	323.2	577.3	84.1	28 993	1 338	6 155	11 261	5 903
2003										
January	130.2	77.1	321.5	567.8	85.1	29 416	1 468	5 951	10 786	5 834
February	131.6	79.1	294.1	583.1	82.9	29 159	1 418	5 664	11 049	5 841
March	146.1	76.7	262.0	582.4	84.1	32 645	1 457	4 862	11 096	5 944
April	141.5	72.1	258.4	569.0	86.0	31 174	1 502	4 778	11 039	5 947
May	134.9	63.3	235.8	554.1	86.6	29 987	1 295	4 294	10 565	6 093
June	142.9	55.4	224.3	546.1	88.2	31 584	1 150	4 067	10 306	6 202
July	132.8	50.6	189.5	518.0	86.6	29 188	1 029	3 518	9 429	6 081
August	120.4	48.8	218.7	485.7	83.3	28 119	903	4 187	9 841	6 044
September	128.8	54.1	226.6	535.6	82.9	28 423	1 135	4 414	10 565	5 735
October	117.5	56.9	235.1	540.8	79.4	27 518	1 246	4 685	11 115	5 695
November	124.6	76.0	243.8	556.9	77.8	28 117	2 199	4 900	11 771	5 753
TREND ESTIMATES										
2002										
September	140.3	65.0	345.0	585.6	85.6	31 665	1 392	6 301	10 986	5 934
October	140.9	70.8	346.2	584.2	86.1	31 594	1 477	6 345	10 952	5 972
November	139.5	75.6	340.3	582.9	86.0	31 213	1 512	6 288	10 967	5 966
December	137.2	78.5	328.0	581.7	85.3	30 680	1 506	6 114	11 012	5 929
2003										
January	135.5	79.2	311.7	580.6	84.7	30 304	1 481	5 845	11 066	5 897
February	135.8	77.7	292.8	579.0	84.5	30 311	1 455	5 492	11 069	5 896
March	137.6	74.3	272.3	574.2	84.9	30 613	1 423	5 080	10 967	5 938
April	139.3	69.2	251.6	564.6	85.7	30 860	1 365	4 655	10 739	6 008
May	138.9	62.9	233.4	550.7	86.4	30 775	1 252	4 290	10 439	6 067
June	136.3	57.4	221.5	536.9	86.5	30 291	1 144	4 082	10 203	6 079
July	132.2	54.0	217.0	527.0	85.6	29 559	1 092	4 055	10 125	6 038
August	128.2	53.7	218.1	523.6	84.1	28 860	1 127	4 157	10 238	5 960
September	124.9	55.6	222.2	525.6	82.3	28 314	1 238	4 321	10 498	5 871
October	122.4	58.7	227.8	530.8	80.6	27 909	1 394	4 506	10 825	5 788
November	120.7	62.7	234.8	537.9	79.0	27 620	1 578	4 707	11 182	5 709

Source: ABS data available on request, Livestock Slaughtering Collection.

		Jun qtr	Sep qtr	Dec qtr	Mar qtr	Jun qtr	Sep qtr
	Units	2002	2002	2002	2003	2003	2003
<b>Livestock products</b>							
Milk							
Factory intake	million litres	r 1 225.6	1 666.0	2 489.6	1 457.7	971.1	1 491.7
Market sales by factories(b)	million litres	r 114.0	r 119.4	r 118.9	r 113.8	r 120.4	123.6
Milk products							
Cheese(c)	tonnes	r 69 537	66 242	96 549	77 855	r 60 550	63 476
Whole milk powder(d)	tonnes	r 42 784	48 113	66 882	34 884	19 726	42 746
Skim milk/buttermilk powder	tonnes	28 076	r 55 879	r 88 206	r 32 198	r 24 788	45 124
Butter/butteroil	tonnes	22 244	30 371	46 410	25 249	15 966	22 264
Wool receivals							
Original	tonnes	24 921	r 36 459	r 45 598	r 27 060	r 19 327	27 624
Seasonally adjusted	tonnes	r 36 956	r 34 880	r 32 239	r 31 367	r 28 597	26 445
Trend(e)	tonnes	r 37 542	r 35 426	r 32 625	r 30 740	r 28 717	27 067
Live sheep exports							
Quantity	number	448 477	301 684	65 611	124 602	195 991	210 103
Gross weight	tonnes	28 644	14 887	3 547	6 495	9 388	10 186
Chickens slaughtered							
Original	'000	29 041.4	28 625.5	30 632.3	29 496.2	29 138.0	29 312.9
Seasonally adjusted	'000	r 29 263.2	r 29 251.2	r 29 353.1	r 29 840.2	r 29 365.3	29 876.6
Trend(e)	'000	r 28 913.6	r 29 373.6	r 29 516.5	r 29 558.0	r 29 654.3	29 736.8
Chicken meat							
Original	tonnes	49 116	49 518	54 613	51 239	49 071	49 055
Seasonally adjusted	tonnes	r 49 195	r 51 207	r 52 121	r 51 949	r 49 114	50 743
Trend(e)	tonnes	r 48 900	r 51 212	r 51 894	r 51 279	r 50 500	49 941
<b>Other products</b>							
Electricity(f)	'000 megawatt hours	11 212	12 436	11 880	r 11 722	11 719	11 567
Ready mixed concrete(g)(h)	'000 cubic metres	1 310	1 392	1 315	1 137	1 289	1 352
Hardwood woodchips(g)(i)	tonnes	39 293	40 155	35 383	31 415	25 969	26 395

(a) Quarterly statistics on Victoria's production of gold, oil and gas are available in Australian Mineral Statistics, published by the Australian Bureau of Agricultural and Resource Economics.

(b) Original series.

(c) Includes processed cheese.

(d) Data from September quarter 2001 onwards are for Australia. For confidentiality reasons, State data are no longer available. The majority of whole milk powder production occurs in Victoria.

(e) Trend estimates for the most recent quarters are subject to revision when data for the subsequent quarters become available.

(f) Total metered generation of all generators in Victoria.

(g) Compiled from the ABS manufacturing production collection. Excludes details relating to both single establishment manufacturing enterprises with fewer than four persons employed, and establishments predominantly engaged in non-manufacturing activities which may also undertake some limited manufacturing activity. However, the effect of these establishments on production levels and movements is usually marginal.

(h) ANZSCC 375.01.01. Reported production of ready mixed concrete for sale as such. Excludes production used, or for use, in the same business. (An improvement in coverage for Melbourne Statistical Division from June month 2000 contributed approximately a 4% increase in the June month 2000 production level for Victoria).

(i) ANZSCC 312.03.01. Expressed as greenweight; excludes chips which are not sold or are used in own works.

Source: Australian Dairy Corporation; ABS data available on request, Wool Receivals and Purchases; ABS data available on request, Merchandise Exports; ABS data available on request, Poultry and Game Birds Slaughtered; National Electricity Market Management Company; ABS data available on request, Manufacturing Production Survey.

Section and Division of the SITC Rev3	2001–2002		2002–03		Five months ended November 2003	
	Exports	Imports	Exports	Imports	Exports	Imports
	\$m	\$m	\$m	\$m	\$m	\$m
0 Food and live animals chiefly for food(d)(e)	6 445	1 494	r 4 802	1 713	1 759	672
1 Beverages and tobacco(d)(e)	291	226	349	250	174	105
2 Crude materials, inedible (except fuels)(d)(e)	2 007	623	1 943	675	627	273
3 Mineral fuels, lubricants, and related materials(e)	1 122	1 961	r 930	2 377	482	814
4 Animal and vegetable oils, fats and waxes(d)(e)	106	106	104	127	40	50
5 Chemicals and related products, n.e.c.(d)(e)	1 317	3 930	1 319	4 225	559	1 684
6 Manufacturing goods classified chiefly by material(d)(e)	2 775	4 877	2 629	5 400	969	2 269
7 Machinery and transport equipment(d)(e)	3 965	16 173	r 3 849	18 933	1 761	7 730
8 Miscellaneous manufactured articles(d)(e)	1 328	6 390	1 285	r 6 830	501	2 937
9 Commodities and transactions of merchandise trade, n.e.c.(f)						
97 Gold, non-monetary (excluding gold ores and concentrates)	1 498	541	567	110	27	2
98 Combined confidential items of trade	1 116	1 224	890	1 482	229	527
Other Section 9	272	13	239	7	89	4
<b>Total Section 9</b>	<b>2 886</b>	<b>1 778</b>	<b>1 695</b>	<b>1 599</b>	<b>346</b>	<b>533</b>
<b>Total</b>	<b>22 242</b>	<b>37 558</b>	<b>18 907</b>	<b>42 129</b>	<b>7 217</b>	<b>17 067</b>

(a) Victorian imports are those imported goods released from Customs control within Victoria. Victorian exports are those whose final stage of production or manufacture occurred within Victoria.

(b) Standard International Trade Classification.

(c) Any discrepancies between sums of the component items and totals are due to rounding.

(d) Excludes export commodities subject to a confidentiality restriction. These are included in Section 9.

(e) Excludes imports commodities subject to a confidentiality restriction. These are included in Section 9.

(f) Includes export and import commodities subject to a confidentiality restriction.

Source: ABS data available on request, Merchandise Exports Collection; ABS data available on request, Merchandise Imports Collection.

Period	Victoria(a)			Australia			Victoria exports as a proportion of Australia	Victoria imports as a proportion of Australia
	Exports	Imports	Excess of exports	Exports (including re-exports)	Imports	Excess of exports		
	\$m	\$m	\$m	\$m	\$m	\$m	%	%
2000-01	22 506	36 485	-13 978	119 539	118 317	1 222	18.8	30.8
2001-02	22 242	37 558	-15 316	121 108	119 649	1 460	18.4	31.4
2002-03	18 907	42 129	r -23 222	r 115 464	r 133 130	r -17 666	16.4	31.6
2002								
September	1 709	3 433	-1 724	9 916	10 824	-908	17.2	31.7
October	1 939	3 648	-1 709	10 416	11 893	-1 477	18.6	30.7
November	1 611	3 547	-1 936	9 998	11 646	-1 648	16.1	30.5
December	1 725	3 922	-2 197	10 406	12 129	-1 723	16.6	32.3
2003								
January	1 218	3 478	-2 260	8 927	10 900	-1 973	13.6	31.9
February	1 512	3 390	-1 878	9 056	10 226	-1 170	16.7	33.1
March	1 638	r 3 584	-1 947	r 9 868	10 786	r -918	16.6	33.2
April	1 382	3 589	-2 207	r 8 699	r 10 948	r -2 249	15.9	32.8
May	r 1 441	r 3 118	r -1 678	r 8 972	r 10 371	r -1 399	16.1	30.1
June	r 1 363	r 3 370	-2 008	r 8 806	r 10 718	r -1 912	15.5	31.4
July	r 1 340	r 3 438	r -2 098	r 8 518	r 10 604	r -2 087	r 15.7	r 32.4
August	r 1 404	r 3 248	r -1 844	r 9 069	r 10 870	r -1 801	r 15.5	29.9
September	1 563	3 512	-1 949	9 031	11 487	-2 455	17.3	30.6
October	1 569	3 571	-2 002	9 041	11 851	-2 810	17.4	30.1
November	1 341	3 298	-1 957	8 715	10 210	-1 495	15.4	32.3

(a) Victorian imports are those imported goods released from Customs control within Victoria. Victorian exports are those whose final stage of production or manufacture occurred within Victoria.

Source: *International Trade in Goods and Services* (cat. no. 5368.0); ABS data available on request, *Merchandise Exports Collection*; ABS data available on request, *Merchandise Imports Collection*.

Country	2001-02		2002-03		Five months ending November 2003	
	Exports	Imports	Exports	Imports	Exports	Imports
	\$m	\$m	\$m	\$m	\$m	\$m
Belgium-Luxembourg	97	285	61	395	—	—
Brazil	56	144	r 35	176	13	77
Canada	204	351	234	478	76	192
China	1 559	4 378	1 601	5 083	700	2 336
Fiji	211	144	186	99	52	34
Finland	10	211	8	225	5	95
France	166	882	126	1 669	56	649
Germany	409	2 761	461	3 342	193	1 419
Hong Kong (SAR of China)	1 100	435	617	346	197	153
India	257	332	194	384	75	163
Indonesia	486	1 110	350	1 058	193	316
Italy	399	1 112	422	1 382	107	563
Japan	2 093	4 895	1 785	r 5 217	627	2 156
Korea, Republic of (South)	1 121	1 053	939	956	392	450
Malaysia	538	1 064	462	1 141	180	446
Mexico	166	110	137	128	51	56
Netherlands	111	386	114	448	36	177
New Zealand	2 058	1 751	r 2 185	1 866	918	796
Pakistan	71	97	41	95	17	32
Papua New Guinea	133	11	120	10	40	4
Philippines	458	171	345	208	122	101
Saudi Arabia	1 404	188	1 051	133	410	61
Singapore	1 137	825	r 650	930	177	372
South Africa	228	253	215	327	74	157
Sweden	32	543	43	552	20	205
Switzerland	51	340	50	342	14	139
Taiwan	674	906	696	1 006	245	434
Thailand	603	834	611	982	192	444
United Kingdom	691	1 888	647	1 962	227	722
United States of America	2 151	7 259	1 828	r 7 615	768	2 693
Other and unknown	3 566	2 840	2 692	r 3 575	1 040	1 623
<b>Total(c)</b>	<b>22 242</b>	<b>37 558</b>	<b>18 907</b>	<b>42 129</b>	<b>7 217</b>	<b>17 067</b>

(a) Victorian imports are those imported goods released from Customs control within Victoria. Victorian exports are those whose final stage of production or manufacture occurred within Victoria.

(b) The list of countries in this table reflects the volume of trade with Victoria.

(c) Any discrepancies between sums of component items and the total are due to rounding.

Source: ABS data available on request, Merchandise Exports Collection; ABS data available on request, Merchandise Imports Collection.



	Proportion of days per quarter with Ozone Pollutant Index(b) at stated level(c)								Proportion of days per quarter with Visibility Pollutant Index(b) at stated level(c)							
	2001				2002				2001				2002			
	Jun	Sept	Dec	Mar	Jun	Sept	Dec	Mar	Jun	Sept	Dec	Mar	Jun	Sept	Dec	Mar
	%	%	%	%	%	%	%	%	%	%	%	%	%	%	%	%
<b>West(d)</b>																
Very Good	89	88	81	63	90	87	60	51	48	47	79	67	40	60	59	50
Good	11	12	19	32	10	13	37	40	31	34	21	30	41	34	34	28
Fair	—	—	—	4	—	—	3	7	19	14	—	3	15	6	6	8
Poor	—	—	—	—	—	—	—	2	2	6	—	—	3	1	1	7
Very Poor	—	—	—	—	—	—	—	—	—	—	—	—	1	—	—	8
<b>East(d)</b>																
Very Good	93	90	83	67	82	76	46	49	21	24	77	58	26	46	61	52
Good	7	10	17	30	18	24	50	40	44	51	23	41	36	36	35	23
Fair	—	—	—	3	—	—	4	9	20	15	—	1	20	12	3	10
Poor	—	—	—	—	—	—	—	2	15	7	—	—	14	6	1	4
Very Poor	—	—	—	—	—	—	—	—	—	4	—	—	3	—	—	10
<b>City(d)</b>																
Very Good	100	100	96	90	99	100	89	77	43	58	88	85	50	75	74	59
Good	—	—	4	9	1	—	11	20	39	28	12	15	33	22	23	22
Fair	—	—	—	1	—	—	—	3	16	9	—	—	14	2	2	7
Poor	—	—	—	—	—	—	—	—	2	5	—	—	3	—	1	5
Very Poor	—	—	—	—	—	—	—	—	—	—	—	—	—	—	—	7
<b>Geelong(d)</b>																
Very Good	95	99	94	70	84	98	77	71	51	55	94	88	57	72	85	72
Good	6	1	6	27	16	2	23	21	37	35	6	12	28	22	15	13
Fair	—	—	—	3	—	—	—	8	10	9	—	—	15	6	—	5
Poor	—	—	—	—	—	—	—	—	2	1	—	—	—	—	—	3
Very Poor	—	—	—	—	—	—	—	—	—	—	—	—	—	—	—	7
<b>Latrobe Valley(d)</b>																
Very Good	93	87	86	83	85	89	60	61	21	25	85	71	25	25	84	56
Good	7	13	14	17	15	11	40	36	41	58	15	24	35	45	15	20
Fair	—	—	—	—	—	—	—	3	30	13	—	2	30	26	1	8
Poor	—	—	—	—	—	—	—	—	8	3	—	2	9	3	—	6
Very Poor	—	—	—	—	—	—	—	—	1	1	—	—	1	1	—	11

(a) The EPA reports air quality as an index for any given pollutant as its concentration expressed as a percentage of the relevant standard. It enables easy interpretation of whether the pollutant is at a level which may cause harm. An index value of 100 means the pollutant is currently at a concentration equal to the National Environment Protection Measure (Air NEPM) or State Environment Protection Policy (The Air Environment) (SEPP) standard levels (levels designed to protect human health and the environment). Indexes are calculated separately for each measured pollutant: Ozone, Nitrogen Dioxide, Sulfur Dioxide, Carbon Monoxide, Fine Particulates (PM10), Visibility (Airborne Particle Index). For each station, the daily pollutant indexes are the maximum index values for that day. Note that not all pollutants are measured at each station. The EPA also calculates an overall Air Quality Index, which amalgamates each pollutant index into an overall measure of air quality at each station.

(b) Data have been provided for the Ozone and Visibility (or Airborne Particle) Indexes as these are the dominant pollutants and are widely measured across the EPA network. It should also be noted that meteorological conditions are a major determinant on the incidence of elevated pollutant levels. Hence significant daily, seasonal and annual variations can be expected in air quality. For more information on Air Quality, see the EPA website, <<http://www.epa.vic.gov.au>>.

(c) The index is converted into a qualitative scale with 5 commonly understood terms. Very Good (0–33), Good (34–66) and Fair (67–99) represent measurements within the standards, while Poor (100–149) and Very Poor (150+) represent measurements exceeding the standards.

(d) For reporting purposes the Port Phillip Region (PPR) has been divided into 4 regions: East, West, City and Geelong. Air monitoring stations assigned to each region are: East — Alphington, Brighton, Box Hill, Dandenong, Mooroolbark; City — RMIT, Richmond; West — Footscray, Melton, Point Cook, Paisley; Geelong — Point Henry, Geelong South. In addition, the Latrobe Valley has stations at Moe and Traralgon. The regional index is considered to be the maximum of the station indexes calculated within each particular region. The daily index reported for a region is the maximum region index recorded each day.

Source: Environment Protection Authority, Victoria.

Basin	Capacity at full service level ML	Storage levels at end of month (percent of capacity)						Change (percent of capacity) from	
		2002			2003			Nov 2003 to Dec 2003	Dec 2002 to Dec 2003
		Oct	Nov	Dec	Oct	Nov	Dec		
Goulburn	3 833 500	24.7	21.6	19.1	46.4	46.5	44.0	-2.5	24.9
Broken	405 000	39.0	35.4	31.9	50.6	49.2	46.3	-2.9	14.3
Campaspe	387 060	27.1	23.4	20.4	26.6	24.9	22.2	-2.7	1.7
Loddon	284 300	35.3	32.8	31.0	33.6	33.0	30.7	-2.3	-0.2
Murray	7 113 210	47.2	38.4	32.2	57.6	57.4	54.9	-2.5	22.7
Ovens	37 500	91.0	90.6	81.8	100.2	99.6	99.7	0.2	17.9
Werribee	76 020	43.9	37.1	30.1	17.6	19.5	16.4	-3.1	-13.7
Maribyrnong	24 900	22.4	20.9	18.8	11.6	12.1	11.5	-0.6	-7.3
Glenelg/Wimmera	770 410	10.4	9.4	8.7	17.2	17.5	12.9	-4.6	4.2
Thomson/Latrobe	1 466 200	59.2	54.7	50.4	54.2	55.6	54.5	-1.1	4.1
<b>Total</b>	<b>14 398 100</b>	<b>39.5</b>	<b>33.6</b>	<b>29.1</b>	<b>50.4</b>	<b>50.4</b>	<b>47.9</b>	<b>-2.5</b>	<b>18.9</b>
Total Volume of Water									
In Melbourne Water storages(a)	1 772 500	54.3	52.9	51.2	56.3	57.5	56.6	-1.0	5.4
In rural water authority storages(b)	9 773 495	35.6	30.4	26.4	48.8	48.7	45.9	-2.8	19.5

(a) The total volume in Melbourne Water storages is calculated as the sum of volumes in store in Thomson, Upper Yarra, O'Shannassy, Maroondah, Sugarloaf, Yan Yean, Greenvale, Silvan and Cardinia (Tarago and Devil Bend are excluded).

(b) The total volume in rural water authority storages is calculated (as an approximation) as the sum of volumes in store for all listed storages, minus the volume in Thomson reservoir, minus half of the volume stored in the Murray Basin.

Source: Department of Sustainability and Environment web site, <<http://www.dse.vic.gov.au/vro>>.

	ISPs(a)	POPs(b)	Access lines(c)	All subscribers(d)	Data downloaded by subscribers(d)(e)	Average number of subscribers per access line(f)	Average data downloaded per subscriber(e)(f)
	no.	no.	no.	'000	million Mbs	no.	Mbs
MARCH QUARTER 2003							
<b>Victoria(g)</b>	<b>187</b>	<b>365</b>	<b>241 274</b>	<b>r 1338</b>	<b>r 847</b>	<b>5.5</b>	<b>633</b>
SEPTEMBER QUARTER 2002							
Melbourne	169	217	146 040	1 021	518	7.0	527
Barwon	31	35	4 896	36	14	7.3	387
Western District	12	17	633	6	n.p.	10.2	n.p.
Central Highlands	25	27	2 365	26	7	11.0	285
Wimmera	3	6	n.p.	n.p.	n.p.	n.p.	n.p.
Mallee	14	16	1 041	10	4	9.8	348
Loddon	15	22	2 619	24	8	9.3	311
Goulburn	19	30	1 862	17	5	9.3	249
Ovens-Murray	10	10	800	7	2	8.9	263
East Gippsland	6	12	n.p.	n.p.	n.p.	n.p.	—
Gippsland	14	24	2 819	23	8	8.3	354
<b>Victoria</b>	<b>198</b>	<b>416</b>	<b>163 855</b>	<b>1 180</b>	<b>569</b>	<b>7.2</b>	<b>496</b>
MARCH QUARTER 2002							
Melbourne	179	229	94 419	866	408	9.2	471
Barwon	40	48	4 839	36	13	7.5	344
Western District	14	22	1 433	13	3	9.3	195
Central Highlands	27	29	2 497	25	6	10.0	240
Wimmera	5	8	378	5	n.p.	13.6	n.p.
Mallee	16	18	1 532	14	4	8.9	300
Loddon	18	27	2 289	24	6	10.4	265
Goulburn	20	34	3 348	26	5	7.6	207
Ovens-Murray	12	14	686	7	n.p.	10.3	n.p.
East Gippsland	9	21	821	8	2	9.5	214
Gippsland	16	26	2 302	21	9	9.1	411
<b>Victoria</b>	<b>212</b>	<b>476</b>	<b>114 544</b>	<b>1 045</b>	<b>457</b>	<b>9.1</b>	<b>438</b>
SEPTEMBER QUARTER 2001							
Melbourne	191	241	119 889	946	303	7.9	320
Barwon	33	38	4 273	37	10	8.8	272
Western District	11	16	1 194	17	3	14.4	176
Central Highlands	26	27	3 152	29	5	9.3	188
Wimmera	5	10	417	5	n.p.	13.2	n.p.
Mallee	14	17	1 932	19	4	9.7	198
Loddon	17	27	2 932	30	6	10.3	207
Goulburn	19	32	3 469	29	5	8.4	165
Ovens-Murray	10	12	666	6	n.p.	9.0	n.p.
East Gippsland	7	16	617	10	3	16.0	265
Gippsland	17	29	2 772	31	6	11.1	206
<b>Victoria</b>	<b>220</b>	<b>465</b>	<b>141 313</b>	<b>1 160</b>	<b>347</b>	<b>8.2</b>	<b>299</b>

(a) An Internet Service Provider (ISP) is a resident Australian individual or business offering Internet access services to customers. ISPs are counted in each Statistical Division (SD) where that ISP has a presence. Counts of ISPs reflect only those businesses operating at the end of the reference quarter.

(b) A Point of Presence (POP) is a server in a geographic location where an ISP can be accessed by a subscriber via access lines. Estimates for data at the State/Territory and Statistical Division levels are derived from data provided for POPs (Point of Presence or servers). Recently changing access technologies, infrastructure and operational arrangements have been impacting on the quality of data at the POP level. As a result, data at the Statistical Division level cannot be adequately quality assured and could present misleading indicators of regional activity and usage. However data at Statistical Division level are available on request from Peter Hodgson, telephone 1800 136 387 during business hours or via email on <peter.hodgson@abs.gov.au>.

(c) Lines, points, ports and modem access points available to subscribers to access their ISP.

(d) Subscribers and data downloaded have been apportioned to a SD according to the location of the POP where the activity took place.

(e) A megabyte (Mb) is a data unit of 1,048,576 bytes, sometimes interpreted as 1 million bytes. Volume of data downloaded figures relate to data downloaded during the three months of the reference quarter.

(f) Prior to March 2002, average data downloaded by Internet subscribers was calculated from the number of subscribers at the end of the reference period and the data downloaded over the three months of the reference period. In the current issue, this figure has instead been calculated from an estimate of the number of subscribers at the mid point of the reference period.

(g) Corrigendum. In the September quarter 2003 edition, Table 45 had an error in the March quarter 2003 (Vic.) row. 'All subscribers ('000)' was actually 1,338, and 'Data downloaded by subscribers (million Mbs)' was actually 847.

Source: Internet Activity, Australia (cat. no. 8153.0).

Local Government Area	Offences against the person		Offences against property		Drug offences		Other offences		All offences	
	no.	Rate per 100,000 population	no.	Rate per 100,000 population	no.	Rate per 100,000 population	no.	Rate per 100,000 population	no.	Rate per 100,000 population
Melbourne(a)										
Banyule (C)	712	600	6 263	5 278	184	155	631	532	7 790	6 565
Bayside (C)	358	401	4 056	4 539	120	134	376	421	4 910	5 495
Boroondara (C)	614	388	9 029	5 711	98	62	492	311	10 233	6 473
Brimbank (C)	946	551	11 587	6 752	592	345	846	493	13 971	8 141
Cardinia (S)	333	683	2 238	4 590	97	199	337	691	3 005	6 163
Casey (C)	1 209	631	10 181	5 313	234	122	738	385	12 362	6 451
Darebin (C)	1 082	846	12 200	9 540	443	346	1 010	790	14 735	11 522
Frankston (C)	1 127	973	8 809	7 602	340	293	1 095	945	11 371	9 813
Glen Eira (C)	475	385	6 186	5 013	118	96	526	426	7 305	5 920
Greater Dandenong (C)	1 325	1 034	10 916	8 515	839	654	1 529	1 193	14 609	11 395
Hobsons Bay (C)	586	698	5 623	6 697	175	208	598	712	6 982	8 315
Hume (C)	899	641	9 311	6 634	421	300	745	531	11 376	8 105
Kingston (C)	936	691	8 840	6 526	243	179	1 351	997	11 370	8 394
Knox (C)	826	553	8 160	5 461	204	137	759	508	9 949	6 658
Manningham (C)	265	231	3 712	3 242	153	134	365	319	4 495	3 925
Maribyrnong (C)	603	979	8 252	13 393	499	810	669	1 086	10 023	16 267
Maroondah (C)	749	742	5 607	5 555	161	160	969	960	7 486	7 417
Melbourne (C)	2 541	4 709	28 304	52 458	1 370	2 539	3 520	6 524	35 735	66 230
Melton (S)	294	500	3 890	6 620	118	201	343	584	4 645	7 905
Monash (C)	743	456	8 658	5 315	198	122	492	302	10 091	6 194
Moonee Valley (C)	652	591	8 080	7 326	353	320	632	573	9 717	8 810
Moreland (C)	825	605	9 161	6 713	307	225	652	478	10 945	8 020
Mornington Peninsula (S)	788	580	6 905	5 086	205	151	641	472	8 539	6 290
Nillumbik (S)	163	267	1 752	2 872	61	100	164	269	2 140	3 508
Port Phillip (C)	932	1 139	10 591	12 940	443	541	1 413	1 726	13 379	16 346
Stonnington (C)	840	928	11 884	13 136	243	269	672	743	13 639	15 076
Whitehorse (C)	634	432	7 430	5 063	137	93	538	367	8 739	5 955
Whittlesea (C)	691	572	6 655	5 505	269	223	575	476	8 190	6 775
Wyndham (C)	488	527	5 169	5 582	150	162	431	465	6 238	6 736
Yarra (C)	1 028	1 480	14 002	20 152	668	961	1 039	1 495	16 737	24 088
Yarra Ranges (S)	813	566	5 846	4 067	193	134	688	479	7 540	5 245
Barwon										
Colac-Otway (S)	165	780	977	4 620	70	331	187	884	1 399	6 616
Golden Plains (S)	37	241	305	1 986	7	46	55	358	404	2 630
Greater Geelong (C)	1 271	641	12 047	6 079	303	153	1 009	509	14 630	7 383
Queenscliffe (B)	27	827	143	4 382	2	61	7	215	179	5 486
Surf Coast (S)	131	606	1 158	5 357	45	208	74	342	1 408	6 513
Western District										
Corangamite (S)	95	542	494	2 817	34	194	129	736	752	4 288
Glenelg (S)	146	718	1 092	5 367	38	187	207	1 017	1 483	7 289
Moyne (S)	97	613	522	3 298	24	152	93	588	736	4 651
Southern Grampians (S)	122	715	867	5 079	34	199	230	1 347	1 253	7 340
Warrnambool (C)	284	943	1 602	5 320	99	329	342	1 136	2 327	7 727
Central Highlands										
Ararat (RC)	129	1 098	468	3 983	43	366	191	1 625	831	7 072
Ballarat (C)	773	911	6 704	7 901	229	270	644	759	8 350	9 841
Hepburn (S)	60	412	426	2 925	11	76	44	302	541	3 715
Moorabool (S)	167	657	955	3 758	107	421	240	944	1 469	5 781
Pyrenees (S)	43	651	253	3 830	8	121	33	500	337	5 101

For footnotes see end of table.

...continued

Local Government Area	Offences against the person		Offences against property		Drug offences		Other offences		All offences	
	no.	Rate per 100,000 population	no.	Rate per 100,000 population	no.	Rate per 100,000 population	no.	Rate per 100,000 population	no.	Rate per 100,000 population
Wimmera										
Hindmarsh (S)	63	960	177	2 696	9	137	36	548	285	4 341
Horsham (RC)	186	994	1 109	5 929	92	492	406	2 170	1 793	9 585
Northern Grampians (S)	112	860	588	4 515	33	253	234	1 797	967	7 425
West Wimmera (S)	12	248	80	1 655	9	186	20	414	121	2 503
Yarriambiack (S)	45	546	280	3 400	19	231	55	668	399	4 845
Mallee										
Buloke (S)	36	496	179	2 466	13	179	56	771	284	3 912
Gannawarra (S)	52	433	344	2 865	28	233	72	600	496	4 131
Mildura (RC)	570	1 130	3 077	6 098	177	351	576	1 141	4 400	8 720
Swan Hill (RC)	302	1 408	1 072	5 000	74	345	379	1 768	1 827	8 521
Loddon										
Central Goldfields (S)	119	906	538	4 097	31	236	191	1 455	879	6 694
Greater Bendigo (C)	681	742	4 894	5 329	210	229	726	791	6 511	7 090
Loddon (S)	50	583	402	4 689	9	105	42	490	503	5 867
Macedon Ranges (S)	260	677	1 361	3 546	63	164	185	482	1 869	4 869
Mount Alexander (S)	195	1 136	654	3 809	43	250	163	949	1 055	6 145
Goulburn										
Campaspe (S)	232	632	1 936	5 270	69	188	281	765	2 518	6 854
Delatite (S)	178	844	1 063	5 042	46	218	253	1 200	1 540	7 305
Greater Shepparton (C)	591	1 001	4 281	7 254	206	349	606	1 027	5 684	9 631
Mitchell (S)	295	1 006	1 366	4 660	99	338	318	1 085	2 078	7 089
Moir (S)	112	415	1 150	4 263	34	126	163	604	1 459	5 408
Murrindindi (S)	103	748	652	4 732	21	152	120	871	896	6 503
Strathbogie (S)	76	788	300	3 112	45	467	105	1 089	526	5 456
Ovens-Murray										
Alpine (S)	75	568	542	4 102	32	242	86	651	735	5 563
Indigo (S)	62	416	248	1 665	21	141	55	369	386	2 592
Towong (S)	18	286	131	2 084	4	64	53	843	206	3 277
Wangaratta (RC)	232	869	1 060	3 973	77	289	373	1 398	1 742	6 529
Wodonga (RC)	295	889	1 907	5 746	129	389	421	1 268	2 752	8 291
East Gippsland										
East Gippsland (S)	531	1 334	2 210	5 552	185	465	696	1 749	3 622	9 100
Wellington (S)	376	909	2 137	5 165	178	430	415	1 003	3 106	7 507
Gippsland(a)										
Bass Coast (S)	226	844	1 245	4 650	39	146	265	990	1 775	6 630
Baw Baw (S)	304	825	1 798	4 882	98	266	344	934	2 544	6 907
Latrobe (C)	1 057	1 498	5 964	8 453	360	510	1 536	2 215	8 944	12 677
South Gippsland (S)	171	648	895	3 394	48	182	179	679	1 293	4 903
<b>Victoria</b>	<b>35 642</b>	<b>727</b>	<b>331 200</b>	<b>6 755</b>	<b>13 192</b>	<b>269</b>	<b>37 763</b>	<b>770</b>	<b>417 797</b>	<b>8 521</b>

(a) The majority of the Yarra Ranges (S) LGA is in the Melbourne statistical division. However, the Yarra Ranges (S) — Pt. B SLA is in the Gippsland statistical division. The estimates for the entire Yarra Ranges LGA have been reported as part of Melbourne.

Source: Victoria Police Statistical Services Division, <www.police.vic.gov.au>.

<i>Local Government Area</i>	<i>Houses</i>			<i>Units and apartments</i>			<i>Vacant house blocks</i>		
	<i>2000</i>	<i>2001</i>	<i>2002</i>	<i>2000</i>	<i>2001</i>	<i>2002</i>	<i>2000</i>	<i>2001</i>	<i>2002</i>
	<i>\$'000</i>	<i>\$'000</i>	<i>\$'000</i>	<i>\$'000</i>	<i>\$'000</i>	<i>\$'000</i>	<i>\$'000</i>	<i>\$'000</i>	<i>\$'000</i>
Melbourne(c)									
Banyule (C)	206.0	248.8	281.0	180.5	211.0	247.0	100.3	137.8	168.5
Bayside (C)	450.0	530.0	595.0	278.0	325.0	350.0	61.5	170.0	(a)141.7
Boroondara (C)	420.0	495.0	584.0	235.5	272.3	300.0	120.0	170.0	96.0
Brimbank (C)	147.0	167.5	200.0	125.0	158.5	161.5	67.0	77.0	96.7
Cardinia (S)	137.3	162.0	185.0	100.0	128.5	146.5	50.0	70.0	73.0
Casey (C)	145.0	164.0	187.0	125.0	135.0	157.0	61.0	66.0	79.0
Darebin (C)	210.0	255.0	300.0	135.8	169.8	200.0	93.5	106.7	145.0
Frankston (C)	135.0	155.0	185.0	105.0	124.0	149.0	59.0	64.0	79.0
Glen Eira (C)	316.3	372.0	425.0	190.0	245.0	274.5	110.5	152.0	175.0
Greater Dandenong (C)	132.4	152.0	185.0	95.0	113.0	136.0	88.3	105.0	112.0
Hobsons Bay (C)	192.5	230.0	265.0	150.0	180.0	220.0	72.5	86.0	95.0
Hume (C)	145.0	166.2	191.0	128.5	152.0	173.8	63.0	70.0	84.5
Kingston (C)	222.0	255.0	300.0	160.0	192.5	230.0	125.0	147.0	160.0
Knox (C)	165.0	193.5	233.0	140.0	170.0	195.0	95.5	116.0	158.0
Manningham (C)	272.5	330.0	370.0	205.0	255.0	305.0	131.0	160.3	130.0
Maribyrnong (C)	190.0	240.0	277.8	131.0	158.2	200.0	90.0	127.5	120.0
Maroondah (C)	175.0	201.0	247.0	139.0	160.0	191.0	91.5	93.0	135.0
Melbourne (C)	295.0	347.5	420.0	260.4	285.0	307.5	82.0	149.0	100.0
Melton (S)	128.0	144.0	175.0	90.0	105.0	121.0	64.0	72.0	86.0
Monash (C)	228.5	275.1	320.0	190.0	235.2	265.0	149.6	150.0	147.3
Moonee Valley (C)	255.0	305.0	350.0	180.0	220.0	246.0	110.0	104.1	137.5
Moreland (C)	212.5	252.5	290.0	151.8	188.3	220.0	84.0	90.5	115.0
Mornington Peninsula (S)	165.0	195.0	245.0	125.0	145.0	185.0	56.5	72.0	100.0
Nillumbik (S)	236.3	280.0	317.5	180.0	220.0	240.0	120.0	125.0	160.0
Port Phillip (C)	410.0	500.0	541.8	247.0	272.5	303.0	100.4	176.0	86.5
Stonnington (C)	452.0	531.0	605.0	220.0	282.0	310.0	173.5	287.0	(a)90.5
Whitehorse (C)	225.0	277.8	315.0	184.0	225.0	252.5	110.0	127.5	125.8
Whittlesea (C)	165.0	190.0	224.0	144.0	160.0	190.0	85.0	90.2	107.5
Wyndham (C)	135.0	146.0	175.0	107.0	129.8	140.0	62.0	67.0	77.0
Yarra (C)	300.0	370.0	422.0	245.0	260.0	299.5	170.0	200.0	95.2
Yarra Ranges (S)	148.5	175.0	210.0	125.0	139.7	159.0	75.0	85.0	110.0
Barwon									
Colac-Otway (S)	95.0	125.0	136.3	125.3	125.0	137.0	49.8	58.5	55.0
Golden Plains (S)	117.0	135.0	140.0	(a)87.8	(a)130.0	(a)63.0	37.0	44.0	47.5
Greater Geelong (C)	126.0	149.0	185.0	113.0	127.5	150.0	45.0	52.0	77.0
Queenscliffe (B)	235.0	282.0	402.0	184.3	(a)250.0	288.8	75.0	(a)75.0	(b)75.0
Surf Coast (S)	188.0	244.5	310.0	195.8	228.5	300.0	65.0	90.0	125.0
Western District									
Corangamite (S)	70.0	70.0	85.0	79.0	74.0	83.5	21.5	35.0	28.5
Glenelg (S)	76.0	85.0	99.0	74.5	81.0	95.0	25.0	25.0	27.5
Moyne (S)	105.0	129.8	145.0	148.0	172.3	165.0	35.0	46.0	63.5
Southern Grampians (S)	65.4	75.0	90.0	64.0	77.5	81.8	25.0	28.7	25.3
Warrnambool (C)	128.0	146.0	180.0	100.0	123.3	145.0	40.0	43.0	52.0
Central Highlands									
Ararat (RC)	63.3	65.0	79.1	(a)72.5	74.5	78.0	21.0	28.0	32.0
Ballarat (C)	100.0	122.1	146.5	89.5	103.0	122.5	48.0	50.0	58.0
Hepburn (S)	105.0	125.0	156.0	83.5	137.0	160.0	30.0	37.0	37.3
Moorabool (S)	125.0	140.0	167.5	82.3	90.5	133.5	35.0	42.5	42.0
Pyrenees (S)	64.6	70.0	84.5	(a)40.0	(a)43.0	(a)56.0	19.5	21.0	24.2

For footnotes see end of table.

...continued

<i>Local Government Area</i>	<i>Houses</i>			<i>Units and apartments</i>			<i>Vacant house blocks</i>		
	2000	2001	2002	2000	2001	2002	2000	2001	2002
	\$'000	\$'000	\$'000	\$'000	\$'000	\$'000	\$'000	\$'000	\$'000
Wimmera									
Hindmarsh (S)	40.0	52.8	65.0	(a)79.0	(a)79.0	(a)128.0	6.0	16.6	25.5
Horsham (RC)	90.0	108.0	125.0	89.0	99.5	107.5	32.0	35.6	45.2
Northern Grampians (S)	74.5	83.0	85.0	(a)82.0	81.0	(a)93.0	38.0	32.0	33.5
West Wimmera (S)	43.5	50.0	60.0	(a)63.5	(a)70.0	(a)70.5	8.3	25.0	15.5
Yarriambiack (S)	36.5	43.8	45.0	(a)63.0	(a)123.1	(a)75.0	8.0	18.0	24.0
Mallee									
Buloke (S)	50.0	50.0	55.0	(b)33.6	(a)70.0	(a)76.0	12.8	20.0	25.0
Gannawarra (S)	74.0	80.1	80.5	(a)75.0	100.0	(a)93.0	20.0	30.0	22.3
Mildura (RC)	112.5	130.0	148.5	91.0	105.0	119.3	42.5	48.5	57.0
Swan Hill (RC)	95.0	95.0	120.5	105.0	108.0	118.0	43.0	38.0	43.5
Loddon									
Central Goldfields (S)	67.5	76.5	85.0	64.0	75.0	88.5	20.0	28.9	35.5
Greater Bendigo (C)	105.0	122.0	145.8	92.8	94.0	125.0	36.6	42.0	49.6
Loddon (S)	50.0	60.5	57.8	(a)70.0	(a)65.0	(a)81.5	19.8	25.0	20.0
Macedon Ranges (S)	141.0	170.0	200.0	111.8	127.5	145.0	49.8	53.3	66.0
Mount Alexander (S)	95.0	120.0	153.5	114.0	115.0	135.0	30.0	35.0	37.5
Goulburn									
Benalla (RC) (d)	87.0	104.0	128.0	81.5	87.0	85.3	37.3	46.3	53.5
Campaspe (S)	114.0	125.0	140.0	114.0	95.0	130.0	45.0	47.5	58.0
Greater Shepparton (C)	120.0	137.5	154.9	102.0	105.0	136.0	43.0	51.0	60.0
Mansfield (S) (d)	106.0	117.3	129.0	80.0	81.3	98.0	29.5	37.0	38.5
Mitchell (S)	115.0	128.0	159.0	89.0	66.6	118.0	59.5	59.0	63.0
Moir (S)	100.0	110.0	127.5	85.0	94.0	105.0	31.5	33.9	38.0
Murrindindi (S)	102.5	120.0	130.0	77.0	95.0	136.5	36.5	38.5	43.0
Strathbogie (S)	85.0	94.0	108.0	79.4	94.5	105.0	20.5	25.0	25.0
Ovens-Murray									
Alpine (S)	106.3	122.0	138.0	104.0	114.2	118.0	39.0	40.0	45.0
Indigo (S)	103.0	115.0	130.0	(a)73.0	110.0	90.0	32.8	34.0	40.5
Towong (S)	70.0	75.0	89.5	(a)206.0	(a)27.0	(a)57.8	12.5	27.6	37.0
Wangarratta (RC)	100.0	110.0	130.0	85.0	102.5	89.0	43.0	54.0	51.5
Wodonga (RC)	120.0	132.0	153.5	92.0	90.8	100.5	43.5	41.8	52.5
East Gippsland									
East Gippsland (S)	96.0	105.0	127.0	99.0	92.8	106.0	31.8	38.0	39.9
Wellington (S)	77.5	82.0	90.0	60.0	66.0	79.3	12.0	17.0	15.0
Gippsland(a)									
Bass Coast (S)	100.0	130.0	171.0	114.5	145.0	185.0	30.0	41.5	69.5
Baw Baw (S)	102.0	121.8	148.8	85.0	96.0	125.0	40.0	43.5	55.0
Latrobe (C)	67.5	71.0	81.8	61.0	60.0	69.5	34.0	37.0	39.3
South Gippsland (S)	88.0	92.5	127.5	83.8	91.0	91.4	21.5	22.0	44.3

(a) Less than 10 sales in that year.

(b) Value was carried forward from previous year due to zero sales in represented year.

(c) The majority of the Yarra Ranges (S) LGA is in the Melbourne statistical division. However, the Yarra Ranges (S) — Pt. B SLA is in the Gippsland statistical division. The estimates for the entire Yarra Ranges LGA have been reported as part of Melbourne.

(d) Formerly included in Delatite (S).

*Source: A Guide to Property Values 2002/2003, Department of Sustainability and Environment, Victoria*

Local Government Area	Estimated resident population at 30 June 2001	Taxpayers			
				Average wage and salary income	Median wage and salary income
	no.(a)	no.	%	\$	\$
Melbourne(b)					
Banyule (C)	118 662	50 520	42.6	36 638	32 730
Bayside (C)	88 808	37 405	42.1	48 872	36 464
Boroondara (C)	157 214	63 488	40.4	48 139	36 430
Brimbank (C)	168 247	65 161	38.7	32 226	30 435
Cardinia (S)	47 010	17 918	38.1	32 036	29 307
Casey (C)	181 562	77 839	42.9	32 549	30 812
Darebin (C)	127 889	48 157	37.7	33 328	30 921
Frankston (C)	114 008	44 837	39.3	32 104	29 861
Glen Eira (C)	123 105	49 937	40.6	38 825	33 889
Greater Dandenong (C)	128 516	49 440	38.5	29 857	28 409
Hobsons Bay (C)	83 367	33 970	40.7	36 270	33 487
Hume (C)	135 986	52 425	38.6	32 852	30 699
Kingston (C)	133 887	53 146	39.7	34 488	31 620
Knox (C)	147 433	65 720	44.6	34 259	31 309
Manningham (C)	113 893	46 875	41.2	39 236	32 745
Maribyrnong (C)	61 226	21 425	35.0	33 840	31 786
Maroondah (C)	100 279	44 415	44.3	34 397	31 240
Melbourne (C)	50 673	22 032	43.5	41 941	33 218
Melton (S)	52 830	23 229	44.0	32 636	30 995
Monash (C)	163 141	67 769	41.5	36 066	32 110
Moonee Valley (C)	110 511	47 990	43.4	37 508	33 954
Moreland (C)	136 381	51 008	37.4	33 522	31 258
Mornington Peninsula (S)	132 387	45 956	34.7	32 860	28 634
Nillumbik (S)	60 818	27 992	46.0	38 132	32 451
Port Phillip (C)	80 552	37 768	46.9	46 447	37 268
Stonnington (C)	89 978	39 042	43.4	52 365	37 338
Whitehorse (C)	147 085	59 607	40.5	37 440	33 261
Whittlesea (C)	118 118	47 707	40.4	31 210	29 421
Wyndham (C)	87 141	38 035	43.6	34 232	32 460
Yarra (C)	68 947	31 561	45.8	41 129	34 969
Yarra Ranges (S)	142 553	60 507	42.4	32 075	29 245
Barwon					
Colac-Otway (S)	21 005	7 062	33.6	27 784	26 272
Golden Plains (S)	15 101	4 123	27.3	30 921	28 245
Greater Geelong (C)	194 478	72 689	37.4	32 698	29 841
Queenscliffe (B)	3 276	1 023	31.2	33 317	29 643
Surf Coast (S)	20 872	7 111	34.1	32 218	28 865
Western District					
Corangamite (S)	17 558	4 672	26.6	26 854	25 049
Glenelg (S)	20 392	6 636	32.5	31 718	28 659
Moyne (S)	15 763	4 929	31.3	27 438	25 432
Southern Grampians (S)	17 132	5 491	32.1	27 200	25 638
Warrnambool (C)	29 629	10 519	35.5	28 757	26 760
Central Highlands					
Ararat (RC)	11 721	3 703	31.6	27 577	26 159
Ballarat (C)	83 599	31 239	37.4	30 627	28 109
Hepburn (S)	14 488	4 318	29.8	28 798	26 777
Moorabool (S)	25 087	9 418	37.5	33 173	30 281
Pyrenees (S)	6 641	1 875	28.2	27 534	25 517

For footnotes see end of table.

...continued



Local Government Area	Estimated resident population at 30 June 2001	Taxpayers			
				Average wage and salary income	Median wage and salary income
	no.(a)	no.	%	\$	\$
Wimmera					
Hindmarsh (S)	6 596	1 725	26.2	27 395	25 481
Horsham (RC)	18 586	6 792	36.5	28 080	26 535
Northern Grampians (S)	13 055	4 344	33.3	28 460	26 664
West Wimmera (S)	4 882	1 170	24.0	26 420	24 839
Yarriambiack (S)	8 311	2 102	25.3	26 519	24 757
Mallee					
Buloke (S)	7 331	1 951	26.6	25 783	24 464
Gannawarra (S)	12 055	3 661	30.4	25 933	24 676
Mildura (RC)	49 616	17 050	34.4	27 469	25 617
Swan Hill (RC)	21 349	7 048	33.0	25 556	23 877
Loddon					
Central Goldfields (S)	13 087	3 611	27.6	27 341	26 065
Greater Bendigo (C)	90 449	31 525	34.9	29 023	27 139
Loddon (S)	8 604	2 180	25.3	26 351	24 774
Macedon Ranges (S)	37 672	14 365	38.1	35 942	31 300
Mount Alexander (S)	17 142	5 241	30.6	28 725	26 719
Goulburn					
Campaspe (S)	36 349	12 418	34.2	29 064	27 319
Delatite (S)	20 996	6 814	32.5	28 018	26 075
Greater Shepparton (C)	58 150	21 756	37.4	28 838	26 813
Mitchell (S)	28 406	10 497	37.0	31 747	29 515
Moir (S)	26 810	8 545	31.9	28 033	26 702
Murrindindi (S)	13 640	4 245	31.1	28 439	25 758
Strathbogie (S)	9 648	2 977	30.9	27 192	25 383
Ovens-Murray					
Alpine (S)	13 067	4 321	33.1	27 072	25 075
Indigo (S)	14 716	4 828	32.8	31 410	29 502
Towong (S)	6 311	1 692	26.8	28 222	26 419
Wangarratta (RC)	26 664	9 939	37.3	28 721	27 086
Wodonga (RC)	32 456	13 822	42.6	31 421	29 438
East Gippsland					
East Gippsland (S)	39 439	11 661	29.6	26 824	24 610
Wellington (S)	41 462	13 481	32.5	32 060	28 003
Gippsland(a)					
Bass Coast (S)	25 631	6 396	25.0	27 675	25 630
Baw Baw (S)	36 404	12 623	34.7	29 920	27 200
Latrobe (S)	70 643	24 665	34.9	33 603	30 335
South Gippsland (S)	26 159	7 930	30.3	28 513	26 452
Unincorporated Vic	91	25	27.5	29 672	—
Unknown	—	4 734	—	35 683	30 232
<b>Victoria</b>	<b>4 804 726</b>	<b>1 883 823</b>	<b>39.2</b>	<b>34 894</b>	<b>30 707</b>

(a) Preliminary Estimated Resident Population as at 30 June 2001.

(b) The majority of the Yarra Ranges (S) LGA is in the Melbourne statistical division. However, the Yarra Ranges (S) — Pt. B SLA is in the Gippsland statistical division. The estimates for the entire Yarra Ranges LGA have been reported as part of Melbourne.

Source: *Regional Wage and Salary Earner Statistics, Australia* (cat no. 5673.0.55.001).

## GLOSSARY

**Chain volume measures** Annually-reweighted chain Laspeyres indexes referenced to the current price values in a chosen reference year (i.e. the year when the quarterly chain volume measures sum to the current price annual values). Chain Laspeyres volume measures are compiled by linking together (compounding) movements in volumes, calculated using the average prices of the previous financial year, and applying the compounded movements to the current price estimates of the reference year. Quarterly chain volume estimates are benchmarked to annual chain volume estimates, so that the quarterly estimates for a financial year sum to the corresponding annual estimate.

Generally, chain volume measures are not additive. In other words, component chain volume measures do not sum to a total in the way original current price components do. In order to minimise the impact of this property, the ABS uses the latest base year as the reference year. By adopting this approach, additivity exists for the quarters following the reference year and non-additivity is relatively small for the quarters in the reference year and the quarters immediately preceding it. The latest base year and the reference year will be advanced one year with the release of the June quarter data each year. A change in reference year changes levels but not growth rates, although some revision to recent growth rates can be expected because of the introduction of a more recent base year (and revisions to the current price estimates underlying the chain volume measures).

**Duration of unemployment** The elapsed period to the end of the reference week since a person began looking for work, or since a person last worked for two weeks or more, whichever is the shorter. Brief periods of work (of less than two weeks) since the person began looking for work are disregarded.

**Employed** Persons aged 15 years and over who, during the reference week:

- worked for one hour or more for pay, profit, commission or payment in kind, in a job or business or on a farm (comprising employees, employers and own account workers)
- worked for one hour or more without pay in a family business or on a farm (i.e. contributing family workers)
- were employees who had a job but were not at work and were:
  - away from work for less than four weeks up to the end of the reference week
  - away from work for more than four weeks up to the end of the reference week and received pay for some or all of the four week period to the end of the reference week
  - away from work as a standard work or shift arrangement
  - on strike or locked out
  - on workers' compensation and expected to return to their job
- were employers or own account workers who had a job, business or farm, but were not at work.

<b>Part-time workers</b>	Employed persons who usually worked less than 35 hours a week (in all jobs) and either did so during the reference week, or were not at work in the reference week.
<b>Particles as PM<sub>10</sub></b>	Particles with an aerodynamic diameter of 10 micrometres or less.
<b>Seasonal adjustment</b>	A means of removing the estimated effects of normal seasonal variations from economic time series so that the effects of other influences are obvious. Seasonal variations are the systematic (though not necessarily regular) intra-year movements of economic time series. These are often the result of non-economic phenomena, such as climatic changes and regular religious festivals, e.g. Christmas and Easter.
<b>State final demand</b>	<p>Conceptually identical to domestic final demand at the national level (the sum of private and government final consumption expenditure and private and public gross fixed capital formation).</p> <p>National estimates are based on the concepts and conventions embodied in the <i>System of National Accounts</i>, 1993, but for regional (including State) estimates there is no separate international standard. Although national concepts are generally applicable to State accounts, there remain several conceptual and measurement issues that either do not apply or are insignificant nationally. Most of the problems arise in the measurement of gross state product for the transport and storage, communication services, and finance and insurance industries, where production often takes place across State borders. In these cases, a number of conceptual views can be applied to the allocation of value added by State. For more information, see chapter 28 of <i>Australian System of National Accounts: Concepts, Sources and Methods</i> (cat. no. 5216.0).</p>
<b>Trend estimates</b>	Smoothing seasonally adjusted series produces a measure of trend by removing the impact of the irregular component of the series. The trend estimates are derived by applying a 13-term Henderson weighted moving average to the respective seasonally adjusted series. Readers are reminded that trend estimates are subject to revision as subsequent months' data become available.
<b>Unemployed</b>	<p>Persons aged 15 years and over who were not employed during the reference week, and:</p> <ul style="list-style-type: none"> <li>■ had actively looked for full-time or part-time work at any time in the four weeks up to the end of the reference week and: <ul style="list-style-type: none"> <li>■ were available for work in the reference week</li> <li>■ were waiting to start a new job within four weeks from the end of the reference week, and could have started in the reference week if the job had been available then.</li> </ul> </li> </ul>

## FOR MORE INFORMATION...

- INTERNET** [www.abs.gov.au](http://www.abs.gov.au) the ABS web site is the best place to start for access to summary data from our latest publications, information about the ABS, advice about upcoming releases, our catalogue, and Australia Now—a statistical profile.
- LIBRARY** A range of ABS publications is available from public and tertiary libraries Australia-wide. Contact your nearest library to determine whether it has the ABS statistics you require, or visit our web site for a list of libraries.
- CPI INFOLINE** For current and historical Consumer Price Index data, call 1902 981 074 (call cost 77c per minute).
- DIAL-A-STATISTIC** For the latest figures for National Accounts, Balance of Payments, Labour Force, Average Weekly Earnings, Estimated Resident Population and the Consumer Price Index call 1900 986 400 (call cost 77c per minute).

## INFORMATION SERVICE

Data which have been published and can be provided within five minutes are free of charge. Our information consultants can also help you to access the full range of ABS information—ABS user-pays services can be tailored to your needs, time frame and budget. Publications may be purchased. Specialists are on hand to help you with analytical or methodological advice.

- PHONE** **1300 135 070**
- EMAIL** **[client.services@abs.gov.au](mailto:client.services@abs.gov.au)**
- FAX** 1300 135 211
- POST** Client Services, ABS, GPO Box 796, Sydney 2001

## WHY NOT SUBSCRIBE?

ABS subscription services provide regular, convenient and prompt deliveries of ABS publications and products as they are released. Email delivery of monthly and quarterly publications is available.

- PHONE** 1300 366 323
- EMAIL** [subscriptions@abs.gov.au](mailto:subscriptions@abs.gov.au)
- FAX** 03 9615 7848
- POST** Subscription Services, ABS, GPO Box 2796Y, Melbourne 3001



2136720012035  
ISSN 1445-6710

RRP \$26.00